



28 Lincoln Place Castle Hill NSW

4 3 2

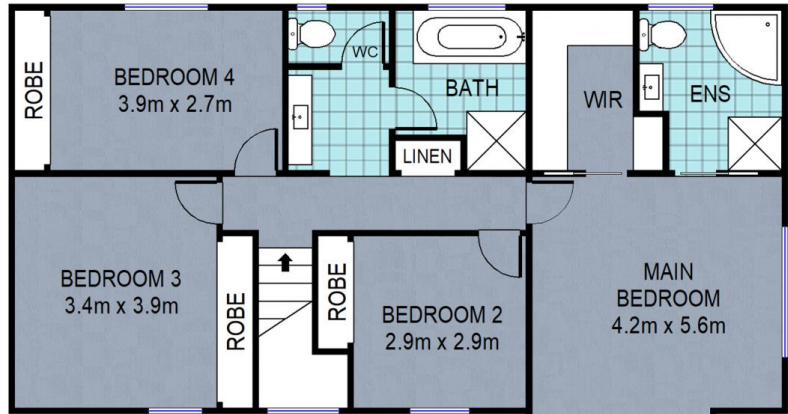
This modern Victorian Colonial style home boasts a versatile array of living spaces and equally spacious accommodation. Designed for a lifetime of enjoyment this gem is ideally situated in the eye of a cul-de-sac in the heart of Castle Hill (with R3 zoning), a stone's throw from amenities including local and City bus stops, the new Metro Station and Castle Towers with its popular restaurants and cinemas.

Handsomely designed with classic elegance, the downstairs floor plan of this family home offers a formal lounge and separate dining room with ornate architectural features, family room with classic slate flooring, study with custom built cabinetry, an oversized rumpus room/billiard room with loads of windows to capture the light and a front and rear terrace. Upstairs are four spacious bedrooms, each with wardrobes. The master bedroom enjoys a stylish

Price : \$ 1,582,000
Land Size : 697 sqm
View : <https://www.castlehaven.com.au/sale/nsw/hills/castle-hill/residential/house/5722255>



Deb Newton
02 9634 5222



FIRST FLOOR



GROUND FLOOR



28 Lincoln Place, **CASTLE HILL** **CastleHaven**

DISCLAIMER: All dimensions are approximate and for illustrative purposes. Interested parties should rely on their own enquiries.