

CastleHaven



7 Bush Paddock Avenue Kellyville NSW

5 🏠 4 🚗 3 🚗

Located in a high quality avenue, this luxurious mansion has all the accommodation for the larger family. Beautifully presented throughout with porcelain tiles and timber flooring, it sparks with appeal. There are five bedrooms, two with ensuite bathrooms, upstairs living and a northern balcony. An entertainer's dream with separate formal lounge and home theatre. The gourmet stone and stainless kitchen will appeal to all with generous family meals and dining adjoining the covered tiled alfresco and barbeque area. Included in this wonderful family residence are designer fixtures and fittings, such as ducted reverse cycle air-conditioning, alarm and auto triple garage with full side access. All sited on a level 700msq block with the new rail link and Norwest Business Park a short distance away.

Land Size : 700 sqm

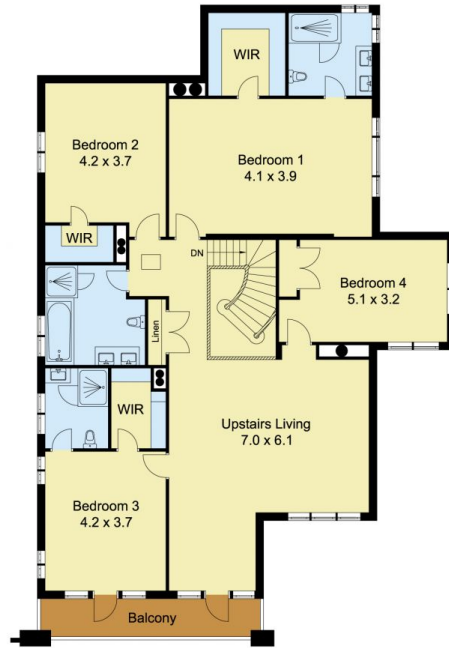
View : <https://www.castlehaven.com.au/sale/nsw/hills/kellyville/residential/house/5734279>



Colin Moss JP
02 9634 5222



GROUND FLOOR



FIRST FLOOR



Scale in metres, indicative only. Dimensions are approximate. All information contained herein is gathered from sources we believe to be reliable. However, we cannot guarantee its accuracy and interested persons should rely on their own enquiries.



7 Bush Paddock Avenue, Kellyville