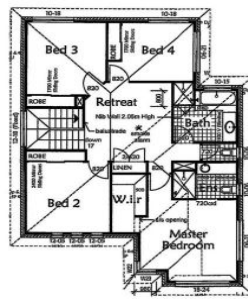


CastleHaven



- ALL HOUSES AND LAND PACKAGES COME COMPLETE WITH THE FOLLOWING:
31.08.19
- INTERNAL:**
- CERAMIC FLOOR TILES AS SPECIFIED
 - GABRIEL FALCONINGE SIBRO
 - JEWEL STONE BENCHTOPS TO KITCHEN & VANITIES
 - WETROOM CHINA TOILET SUITES
 - DOUBLE BROWN PANELT GARAGE DOOR WITH REMOTE CONTROL
 - SANDSBOURGH LEVER INTERNAL DOOR FURNITURE
 - SANDSBOURGH TISSUE CONTAINER/DOOR PEEL OFF DOOR LOCK
 - MASSER TAPS THROUGHOUT HOME (KITCHEN & LAUNDRY WITH FULL-OUT SPRAY)
 - 2 HEAT / FAN LIGHT TO BATHROOM & ENSUITE
 - ONE INTERNAL GAS HEATING POINT
 - 2 TELEPHONE POINTS & 2 TELEVISION POINT
 - INSULATION TO CEILING OF LIVING AREAS & EXTERNAL WALLS
 - 200MM INSULATED CEILING
 - ALARMA SYSTEM
- APPLIANCES:**
- ELECTRIC STAINLESS STEEL OVEN
 - GAS STAINLESS STEEL COOK TOP
 - STAINLESS STEEL WASHMACHINE
 - HOT WATER - GAS - EXTERNAL INSTANTANEOUS DELITE
 - FULLY FINISHED BENCHTOPS ARE CONSIDERING WITH 2 COLOURS
- EXTERNAL:**
- LANDSCAPING TO FRONT & REAR TO THE POWER STANDARDS
 - TILED ALFRESCO COMPLETE WITH GAS BBQ POINT, POWER POINT & CEILING FAN
 - CONCRETE TO DRIVEWAY - (Infrared Solar, plants to arrive)
 - FENCING
 - LETTERBOX
 - CEILINGLINE
- PLEASE NOTE THAT NO OTHER ALARMA HOME PACKAGES ARE INCLUDED

6 Jezebel Street The Ponds NSW

4 🏠 3 🚗 2 🚗

This brand new two storey home facing a beautiful park will be completed and ready to move into by Spring. Downstairs is the formal lounge/dining, study and family/meals area adjoining the modern kitchen with stone bench tops and stainless steel appliances and the tiled alfresco area. Upstairs are four bedrooms, ensuite bathroom, main bathroom and an additional living area. Includes carpet allowance, tiles, auto double garage, ducted air conditioning, full landscaping, fencing and driveway. DIRECTIONS: After turning right into Stanhope Parkway from either Conrad Road or The Ponds Boulevard, take the first on the left after Second Ponds Creek Bridge, then turn left into Viceroy; turn right into Jezebel.

View : <https://www.castlehaven.com.au/sale/nsw/hills/the-ponds/residential/house/5735033>



Castlehaven Realtors
02 9634 5222