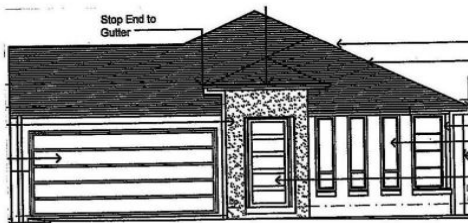


CastleHaven



LOT 2 CICADA STREET THE PONDS



- ALL HOUSE AND LAND PACKAGES COME COMPLETE WITH THE FOLLOWING:-
- INTERIORS:**
- CERAMIC FLOOR TILES AND CARPET ALLOWANCE
 - 20mm STONE BENCHTOPS TO KITCHEN & VANITIES
 - VENTROUS GRINA TOILET SITES
 - DOUBLE WIDTH PANELIFT GARAGE DOOR WITH REMOTE CONTROL
 - MODERN CERAMIC ROOF TILES
 - GAMBROUSH/SHOER INTERNAL DOOR FURNITURE
 - GAMBROUSH/SHOER TRILOCK CONTEMPORARY FRONT ENTRY DOOR LOCK
 - MIXER TAPS THROUGHOUT HOME (KITCHEN & LAUNDRY WITH PULL-OUT SPRAY)
 - 2 HEAT / FAN LIGHTS TO BATHROOMS & ENSUITE
 - ONE INTERNAL GAS HEATING POINT
 - 2 TELEPHONE POINTS & 2 TELEVISION POINT
 - INSULATION TO CEILINGS OF LIVING AREAS & EXTERNAL WALLS
 - 2700mm HIGH CEILINGS - (ground floor - 2 storey designs only)
- APPLIANCES:**
- ELECTRIC STAINLESS STEEL OVEN
 - GAS STAINLESS STEEL COOK TOP
 - STAINLESS STEEL RANGEHOOD
 - HOT WATER - GAS - EXTERNAL INSTANTANEOUS 28 LTR
 - FULLY DUCTED REVERSE CYCLE AIR CONDITIONING WITH 2 ZONES
- EXTERIORS:**
- LANDSCAPING TO FRONT & REAR TO THE PONDS STANDARDS
 - TILED ALFRESCO COMPLETE WITH GAS BBQ POINT, POWER POINT & CEILING FAN
 - CONCRETE TO DRIVEWAY - (suburban back, green to street)
 - FENCING
 - LETTERBOX
 - CLOTHESLINE

13 Cicada Street Kellyville Ridge NSW

4 🏠 2 🚗 2 🚗

Brand new home UNDER CONSTRUCTION in The Ponds.

Completion anticipated by late Spring 2010! The development will be beautifully landscaped and have wonderful street appeal! Three bedrooms plus a media room. Open plan living areas and tiled alfresco area. The master bedroom includes an ensuite bathroom. Gorgeous kitchen with stone benchtops and stainless steel appliances. Includes carpet allowance, ceramic tiles, auto double garage, ducted air conditioning, fencing and driveway. To be completed soon!!

DIRECTIONS: After turning right into Stanhope Parkway from either Conrad Road or The Ponds Boulevard, take the first on the left after Second Ponds Creek Bridge, then turn left into Viceroy; Cicada is the 2nd on the right.

View : <https://www.castlehaven.com.au/sale/nsw/hills/kellyville-ridge/residential/house/5735035>



Castlehaven Realtors
02 9634 5222