



Castle Hill

4 2 2

This spacious Castle Hill home sits on a large, level block with secure side access and potential to expand with a pool and granny flat.

Inside, a study, four bedrooms and expansive living areas await. With a formal lounge, dining area, family room and meals area space is in abundance. To add to the already extensive living areas is a large rumpus room.

Bedrooms two, three and four each have a built-in robe and the sprawling master includes a parent's retreat, huge walk-in wardrobe and ensuite with bath.

Spread across two storeys the home features tiled living areas downstairs and sits handsomely on a large 848sq m block, with a sunny north facing yard and double garage in a popular estate.

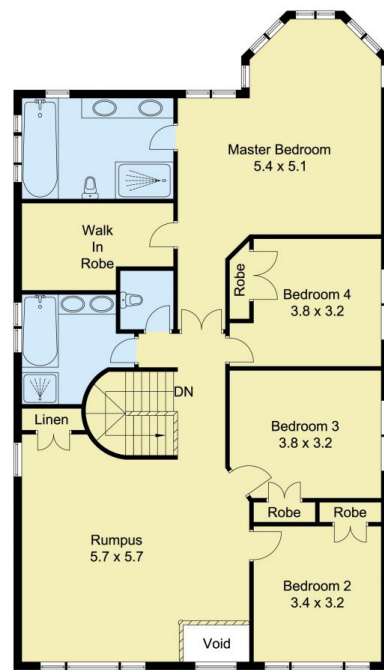
Land Size : 848 sqm
View : <https://www.castlehaven.com.au/sale/nsw/hills/castle-hill/residential/house/5735278>



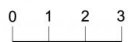
Deb Newton
02 9634 5222



GROUND FLOOR



FIRST FLOOR



Scale in metres, indicative only. Dimensions are approximate. All information contained herein is gathered from sources we believe to be reliable. However, we cannot guarantee its accuracy and interested persons should rely on their own enquiries.

