



## 4 Holman Street Kellyville NSW

5 3 2

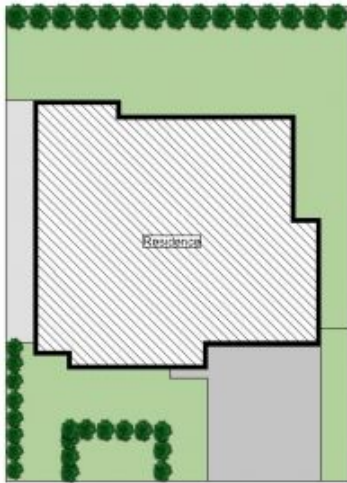
An ultra-spacious design with natural light and effortless living have all been maximized to stunning effect in this substantial family home. It boasts a peaceful setting on the high side of a premier family address opposite a permanent reserve, moments walk from new primary school, playground, Woolworths, cafes, shops and restaurants. Flawless architecture with impressive proportions, while the mood is one of relaxed luxury thanks to stylish neutrals and finishes. The inclusions list is endless! There are four spacious bedrooms upstairs plus optional guest room and 3rd bathroom downstairs, three separate living rooms, high ceilings, plantation shutters, state of the art gas gourmet kitchen with massive walk in pantry, dishwasher, loads of storage, ducted air conditioning, security alarm, three luxurious bathrooms and double automatic garage with internal access. Lovely alfresco outdoor entertainment area with sunny East facing yard with room for kids to play.

**Land Size** : 400 sqm

**View** : <https://www.castlehaven.com.au/lease/nsw/hills/kellyville/residential/house/5735752>



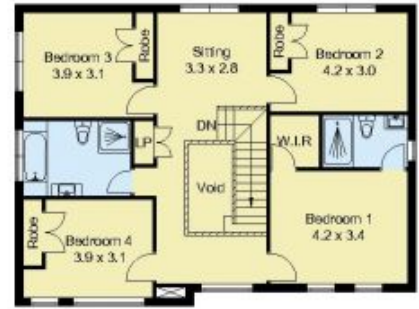
**Vicky Williams**  
02 9634 5222



SITE PLAN



GROUND FLOOR



FIRST FLOOR



Scale in metres, indicative only. Dimensions are approximate. All information contained herein is gathered from sources we believe to be reliable. However, we cannot guarantee its accuracy and interested persons should rely on their own enquiries.



## 4 Holman Street, North Kellyville