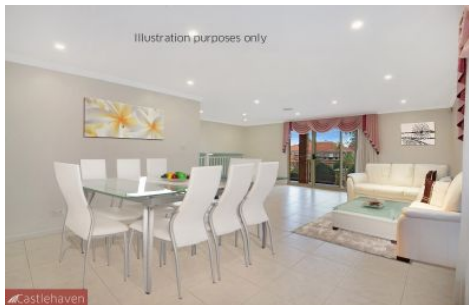


CastleHaven



60 St Pauls Avenue Castle Hill NSW

4 3 2

Beyond its impeccable facade, this large split level home continues to impress with its flexible layout, contemporary interiors and abundant space. It's located close to Express city transport, numerous supermarkets, five private and public schools including William Clarke College and Sherwood Ridge Public School.

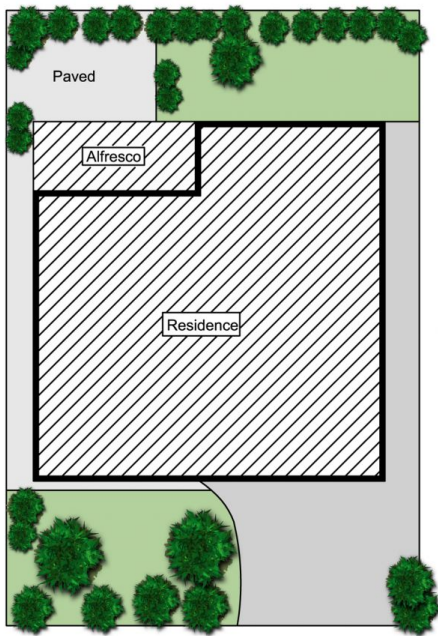
- Formal lounge/dining, meals area, family room, rumpus and upstairs living area
- Immaculately presented and extremely well looked after
- Stone crafted kitchen equipped with gas cooking, pantry and meals bar
- Four light filled big bedrooms well-appointed with masses of storage plus large study
- Spacious main bedroom complete with two separate his and hers walk-in robes and large balcony
- Master bedroom with ensuite bathroom that features corner bath, double basin and shower

Land Size : 600 sqm

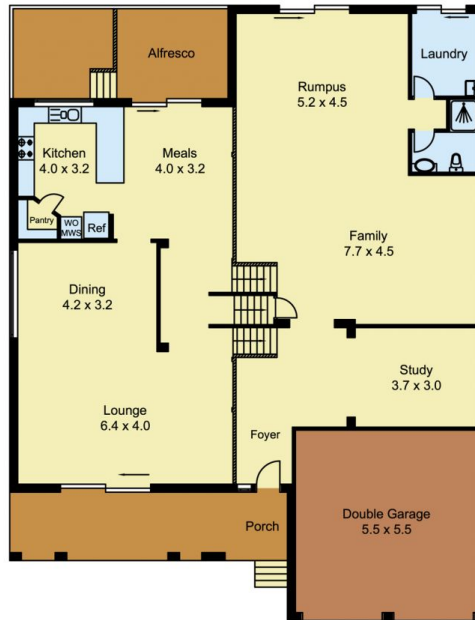
View : <https://www.castlehaven.com.au/sale/nsw/hills/castle-hill/residential/house/5735765>



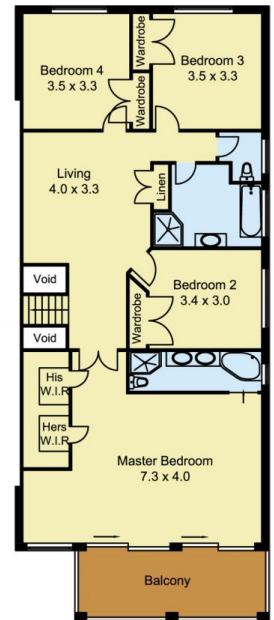
Vicky Williams
02 9634 5222



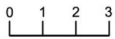
SITE PLAN



GROUND FLOOR



FIRST FLOOR



Scale in metres, indicative only. Dimensions are approximate. All information contained herein is gathered from sources we believe to be reliable. However, we cannot guarantee its accuracy and interested persons should rely on their own enquiries.



60 St. Pauls Avenue, Castle Hill