

CastleHaven



10 Bush Paddock Avenue Kellyville NSW

5 🚗 2 🚚 3 🚗

This cleverly-designed Metricon residence occupying 700sqm on the high-side of a popular street, is sure to impress from the moment you enter. The high ceilings and porcelain tiles harmoniously characterise the expansive lower level, creating a perfect fusion of casual and formal everyday living areas.

The light-filled gourmet kitchen, equipped with 900mm stainless steel appliances, large walk-in-pantry and waterfall stone benchtop, is the centrepiece of this home and integrates well with the nearby family and meals area. It overlooks an enviable outdoor entertaining space, creating an exceptional indoor/outdoor interflow, where the whole family will wile the hours away.

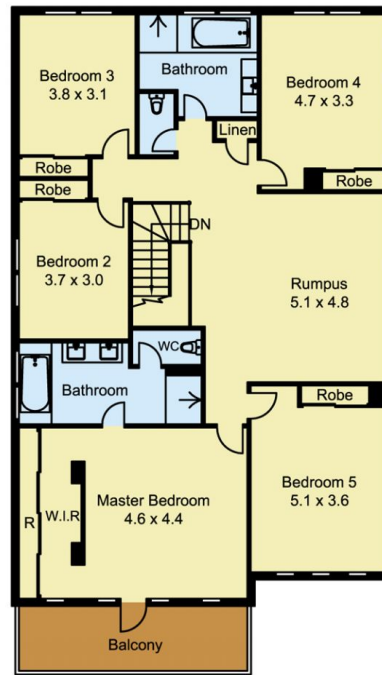
The sun-drenched Northerly backyard is intensely private and is bordered by a low-maintenance garden and paths. There is plenty of space here for children, easily within eyesight from the kitchen/family/meals area.

Land Size : 700 sqm

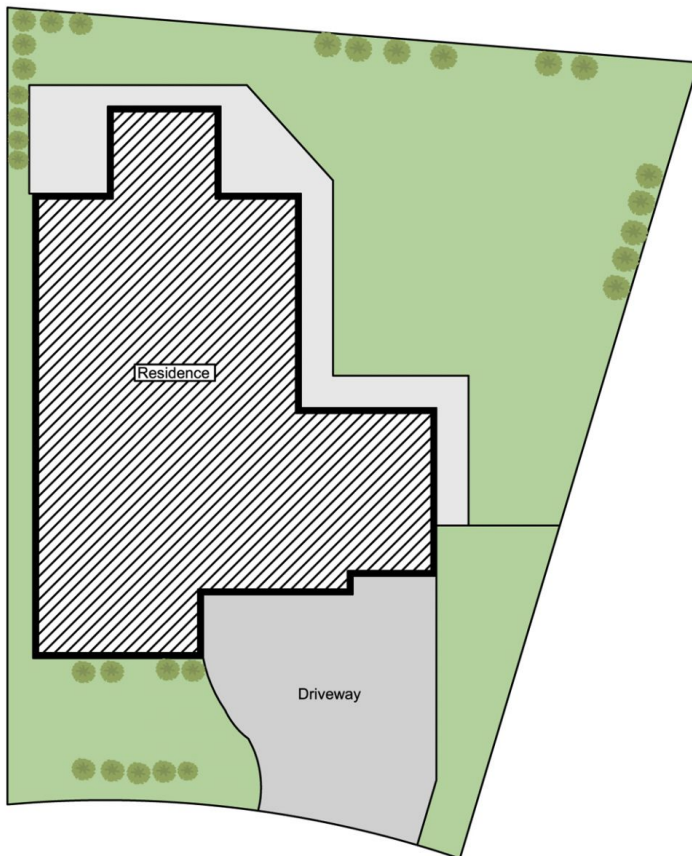
View : <https://www.castlehaven.com.au/sale/nsw/hills/kellyville/residential/house/5735828>



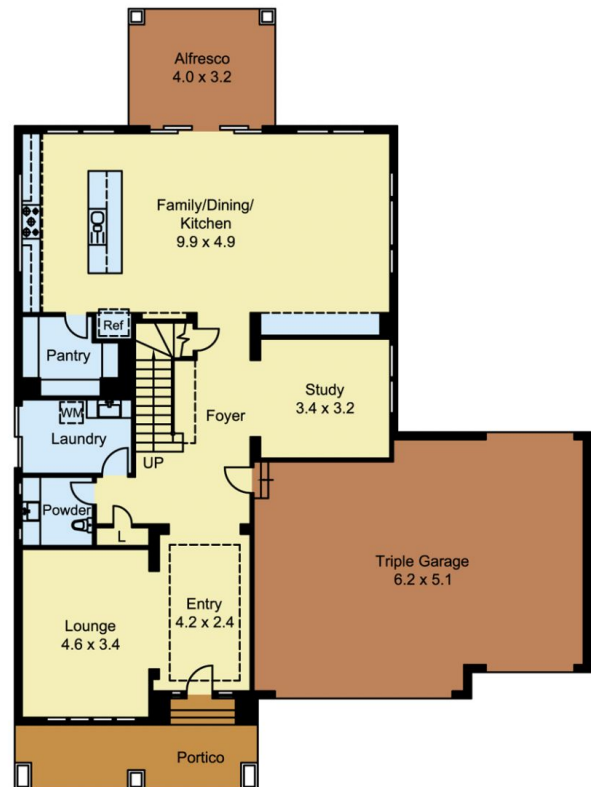
Bryce Morley
02 9634 5222



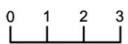
FIRST FLOOR



SITE PLAN



GROUND FLOOR



Scale In metres, indicative only. Dimensions are approximate. All information contained herein is gathered from sources we believe to be reliable. However we cannot guarantee its accuracy and interested persons should rely on their own enquiries.



10 Bush Paddock Avenue, Kellyville