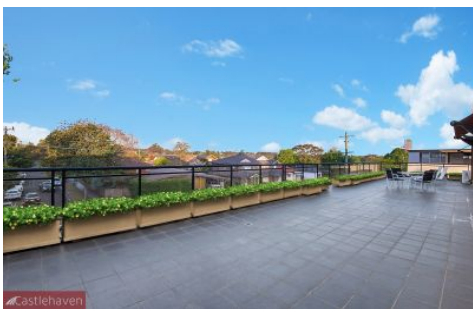


CastleHaven



26/49-55 Beamish Road Northmead NSW

2  1  1 

An attractive boutique top level penthouse apartment in a highly sought after location. This stunning apartment represents a lifestyle of convenience and quality with its walks to everywhere which include shops, buses & parks. This is an ideal destination for a variety of astute buyers and will appeal to downsizers, investors, first home buyers or those that simply live the modern, busy life.

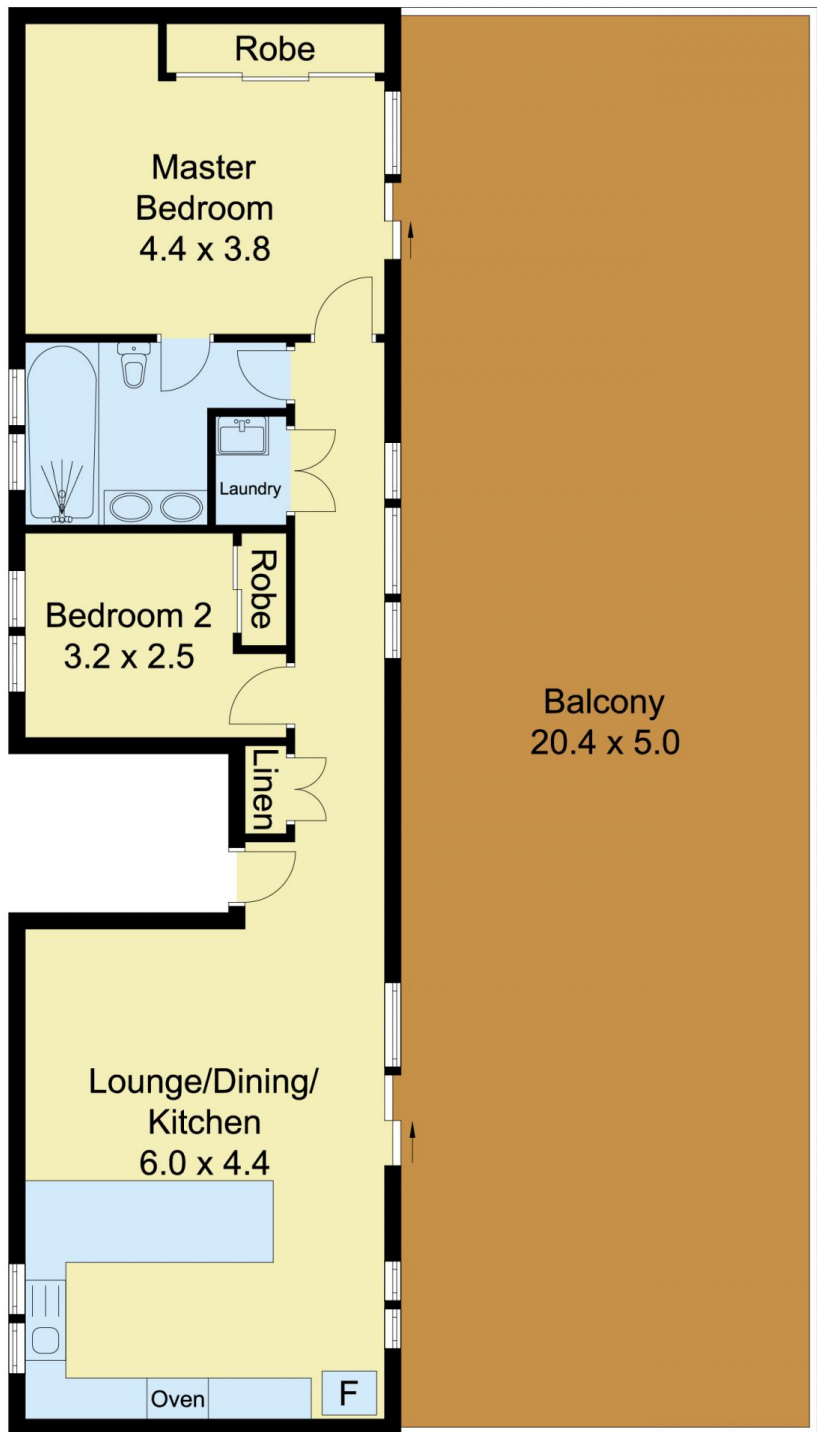
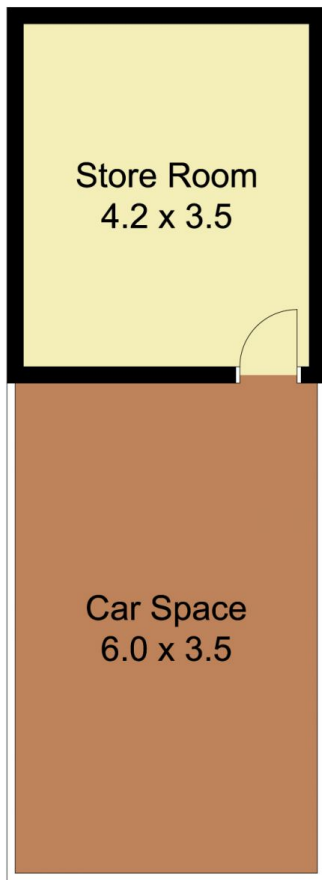
- .Stunning top floor with a beautiful outlook
- .Exquisite, open plan, fully tiled dining & lounge area
- .Two generous bedrooms with built in robes
- .Modern bathroom with double vanity
- .Gourmet kitchen with stone bench tops and gas cooking
- .Split system air conditioning and gas heating
- .Large private balcony
- .Secure car space & large lock up storage room
- .Easy access to Parramatta and Castle Hill

This comfortable laid back apartment offers a great location

View : <https://www.castlehaven.com.au/sale/nsw/parramatta/northmead/residential/apartment/5735841>



Ryan Hawes
0431 687 600



Scale in metres, indicative only. Dimensions are approximate. All information contained herein is gathered from sources we believe to be reliable. However, we cannot guarantee its accuracy and interested persons should rely on their own enquiries.



Unit 26, 49/55 Beamish Road, Northmead