

CastleHaven



3 Farmland Drive Schofields NSW

4 2 2

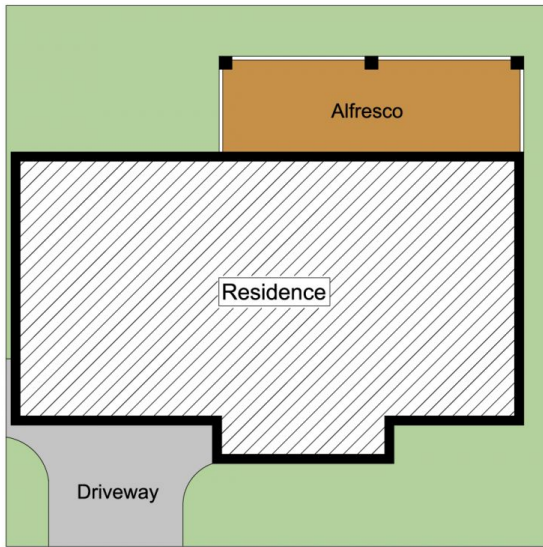
Young family's delight

Master built to exceptional standards, this cutting-edge, beautiful residence offers a rare opportunity to purchase a property of international calibre in one of the best streets of Schofields. Set over two sun filled levels with state of the art finishes and every modern luxury. Four spacious bedrooms, study, three living areas, 2.5 luxury bathrooms, beautifully appointed white polyurethane gas kitchen with Caesarstone splashback, soft closing drawers, modern 900mm appliances and a large walk-in pantry. High ceilings, ducted air conditioning, porcelain tiles, video security, massive storage in all areas. Perfect young family's home with only moments drive to Rouse Hill Town Centre, transport, restaurants, theatres and cafes. Large entertainment area and level low maintenance yard for kids to play. Ready to move in.

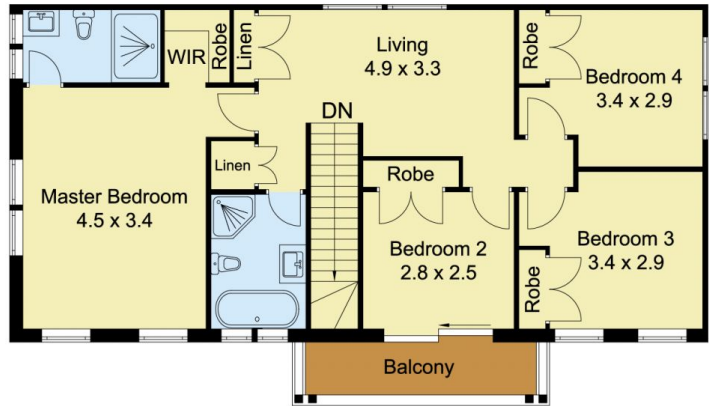
View : <https://www.castlehaven.com.au/sale/nsw/western-sydney/schofields/residential/house/5735850>



Vicky Williams
02 9634 5222



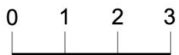
SITE PLAN



FIRST FLOOR



GROUND FLOOR



Scale in metres, indicative only. Dimensions are approximate. All information contained herein is gathered from sources we believe to be reliable. However, we cannot guarantee its accuracy and interested persons should rely on their own enquiries.



3 Farmland Drive, Schofields