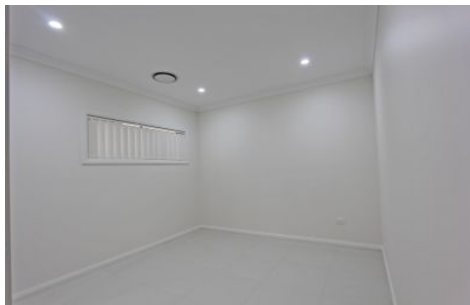


CastleHaven



18 Irvine Street Schofields NSW

4 2 2

This stylish near new home offers a low maintenance lifestyle with all modern features and comforts. Huge, open plan family room and stone, gas kitchen with stainless steel appliances including dishwasher & walk-in pantry. Separate Media/Rumpus room. Four bedrooms with walk-in robe and ensuite to main, built-in robes to remainder. Two bathrooms, including spa to main bathroom. Alfresco dining area with gas point for barbeque and/or heater. Ducted air conditioning, gas points, alarm, lots of storage, high ceilings, double auto garage, water tank and recycled water. Near new Guntawong train station, new primary and high schools, local shops, M7, buses and two minutes to Rouse Hill Town Centre.

AVAILABLE NOW

View : <https://www.castlehaven.com.au/lease/nsw/western-sydney/schofields/residential/semi-detached/5735854>



Rachel Robinson
0431 285 021

WOULD YOU LIKE TO ATTEND OUR INSPECTION?

<https://www.castlehaven.com.au>