

## 9 Whitechapel Avenue Schofields NSW

4 3 2

Where could the privileged family be more appropriately accommodated than in this incredible, brand new 28sq single level residence that exudes high quality from top to toe. Situated in a quiet avenue, a short distance from all amenities, within walking distance of Schofields train station, primary school, permanent reserve and Woolworths. The home offers an endless list of inclusions: extra high ceilings, beautiful decorative cornices, downlights, porcelain floors all throughout living area and carpet in bedrooms (not installed yet), state of the art, white, polyurethane gourmet kitchen with soft closing cupboards, 40mm Caesarstone splashback and stunning waterfall kitchen bench, 900mm quality appliances, ducted air, security video alarm, window coverings and double auto garage with internal access. Open plan living areas, four generous bedrooms, open study plus three ultra-modern bathrooms. This complete package residence

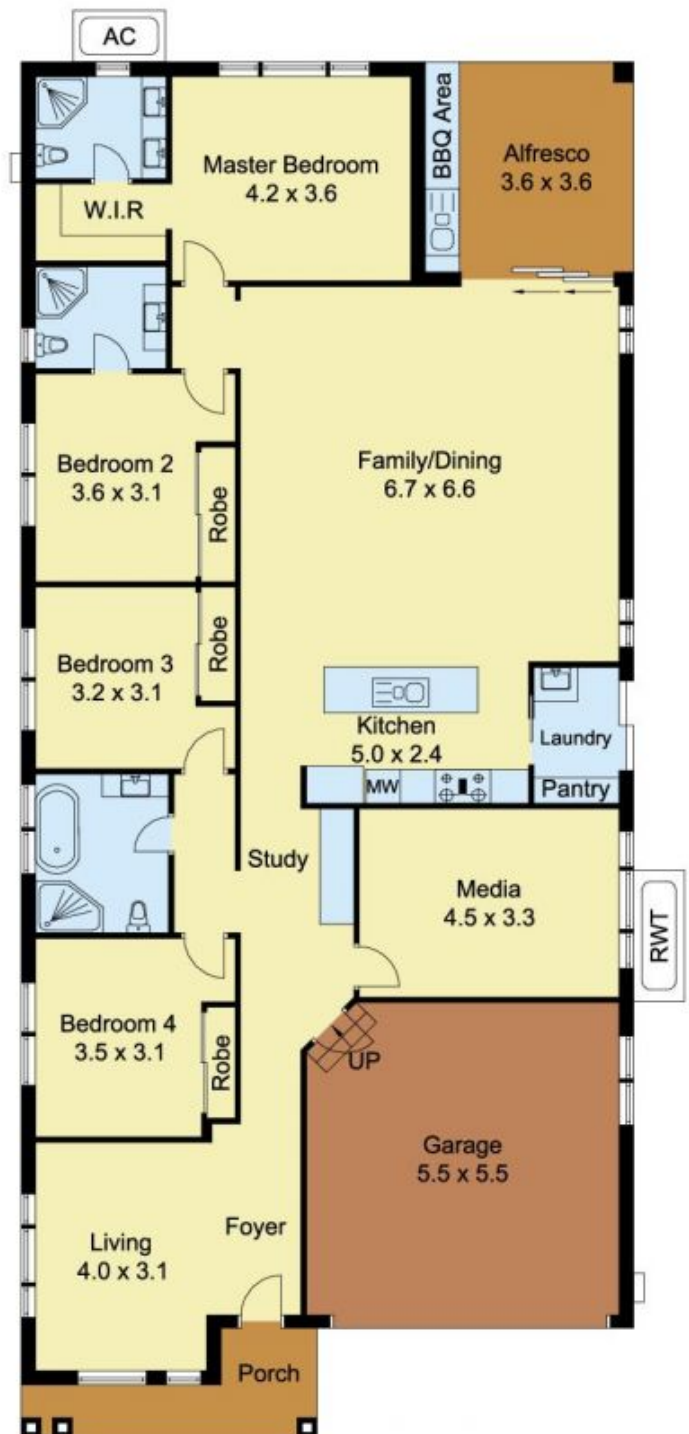
**View :** <https://www.castlehaven.com.au/sale/nsw/western-sydney/schofields/residential/house/5735867>



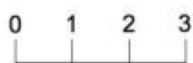
**Vicky Williams**  
02 9634 5222



SITE PLAN



GROUND FLOOR



Scale in metres, indicative only. Dimensions are approximate. All information contained herein is gathered from sources we believe to be reliable. However, we cannot guarantee its accuracy and interested persons should rely on their own enquiries.

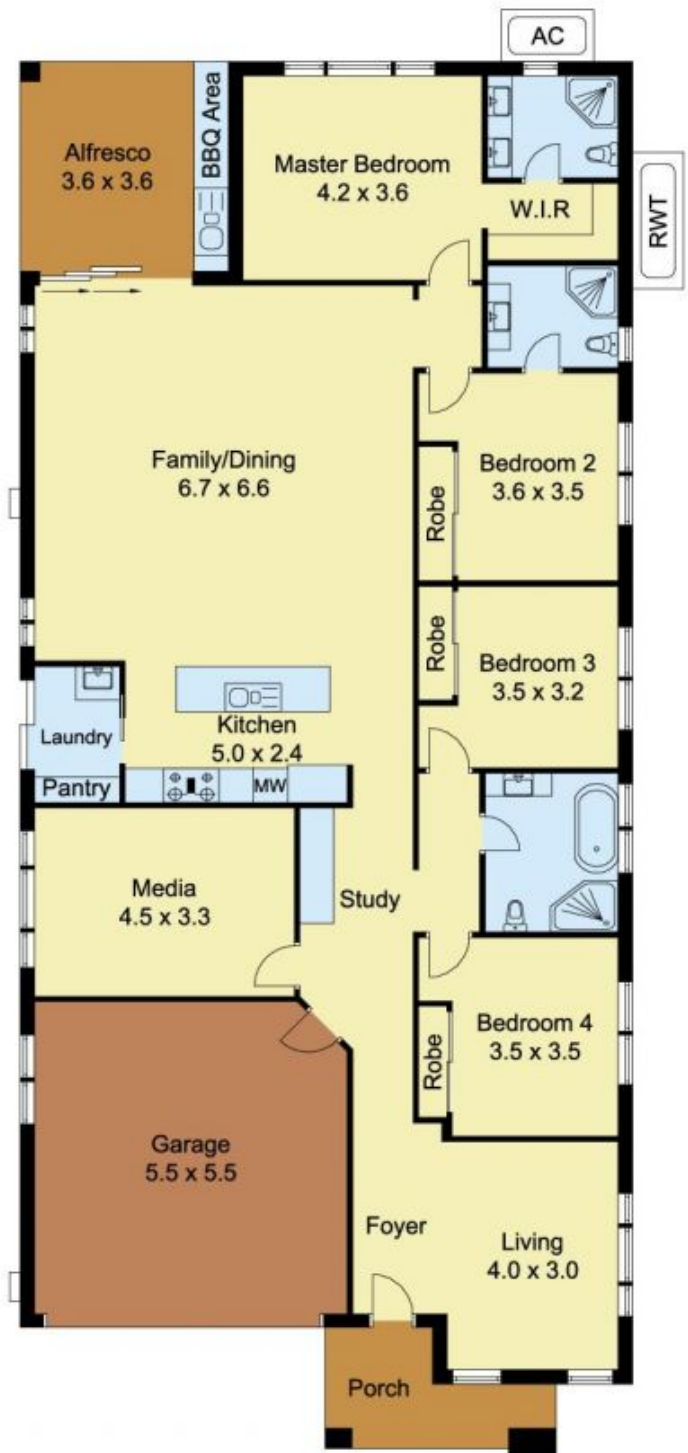


9 Whitechapel Avenue, Schofields

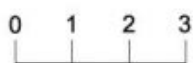




SITE PLAN



GROUND FLOOR



Scale in metres, indicative only. Dimensions are approximate. All information contained herein is gathered from sources we believe to be reliable. However, we cannot guarantee its accuracy and interested persons should rely on their own enquiries.



5 Whitechapel Avenue, Schofields