



27 Thomas Boulton Circuit Kellyville NSW

4  3  3 

Renowned Hills builder Billyard Homes has just finalised completion on an exceptional new home that boasts a modern and clever design sure to bring single-level living into a new class.

With a commanding vestibule, the entry to this stunning property is a hint of the excellence to come. Quality floor tiles and feature ceilings are on show and there are generous living spaces in the formal lounge and home theatre area.

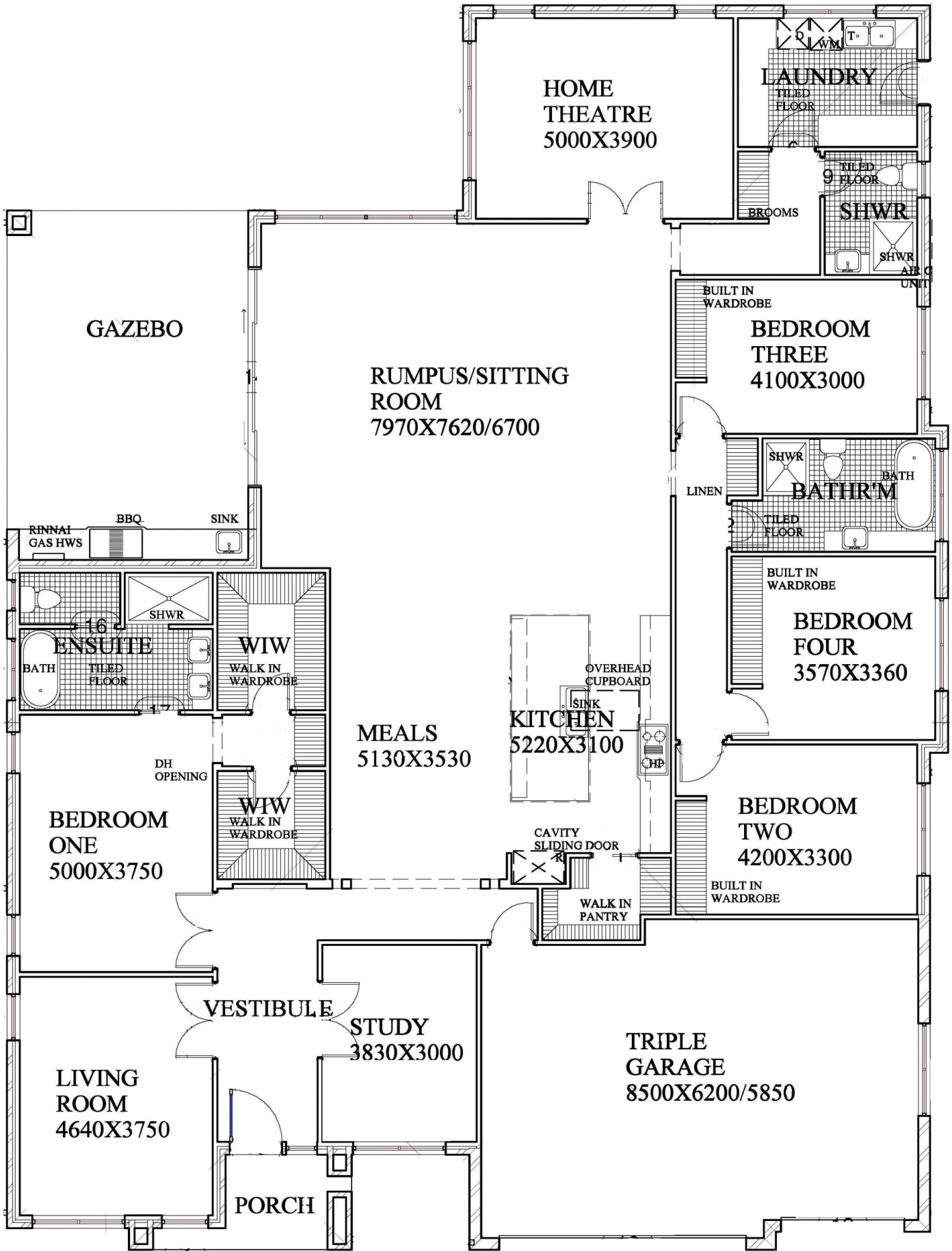
At the heart of the home is a stunning kitchen, meals and rumpus area which enjoys a flowing, open-plan design. The over-sized kitchen boasts a stone island waterfall bench, Blum hardware on the cabinetry, walk-in pantry and quality European appliances.

Land Size : 780 sqm

View : <https://www.castlehaven.com.au/sale/nsw/hills/kellyville/residential/house/5735883>



Ryan Hawes
0431 687 600



HOME
THEATRE
5000X3900

LAUNDRY
TILED
FLOOR

GAZEBO

RUMPUS/SITTING
ROOM
7970X7620/6700

SHWR
SHWR
AIR C
UNIT

BEDROOM
THREE
4100X3000

BATHR'M

RINNAI
GAS HWS
BBQ
SINK

ENSUITE

WIW
WALK IN
WARDROBE

BEDROOM
FOUR
3570X3360

MEALS
5130X3530

KITCHEN
5220X3100

BEDROOM
TWO
4200X3300

BEDROOM
ONE
5000X3750

WIW
WALK IN
WARDROBE

CAVITY
SLIDING DOOR

WALK IN
PANTRY

VESTIBULE
STUDY
3830X3000

TRIPLE
GARAGE
8500X6200/5850

LIVING
ROOM
4640X3750

PORCH