

CastleHaven



3 Bush Paddock Avenue Kellyville NSW

5 3 3

Sprawling across a magnificent almost 48 squares, this split level designer home will take your breath away. It boasts finishes and fittings that are dedicated to ensuring a feeling of pampered relaxation and decadence throughout this sumptuous home. With a commanding street presence, this executive style, family residence is lavishly decorated and equipped with every inclusion you could dream of, ensuring that it truly represents luxury living at its best.

Located in a quiet avenue within an exciting new Kellyville development area, this five-bedroom home boasts spacious living areas of generous proportions and at the centre of the home is a double-sided gas fire place which creates a wonderful feature in the formal lounge and family area.

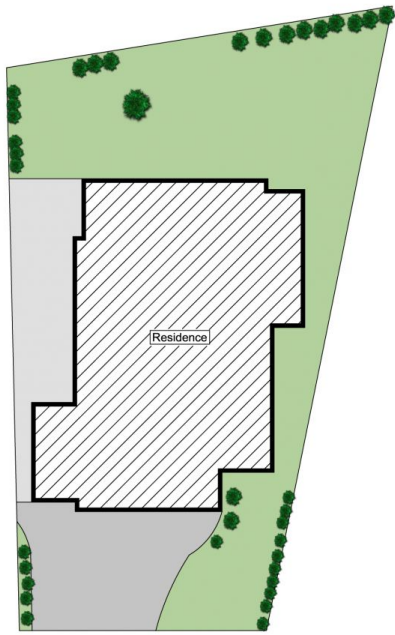
The stunning, polyurethane gourmet kitchen will be a

Land Size : 701 sqm

View : <https://www.castlehaven.com.au/sale/nsw/hills/kellyville/residential/house/5735896>



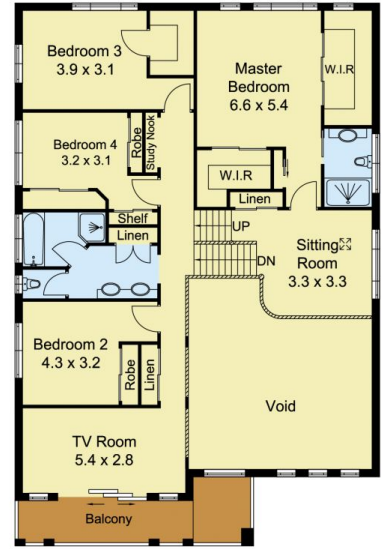
Ryan Hawes
0431 687 600



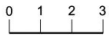
SITE PLAN



GROUND FLOOR



FIRST FLOOR



Scale in metres, indicative only. Dimensions are approximate. All information contained herein is gathered from sources we believe to be reliable. However, we cannot guarantee its accuracy and interested persons should rely on their own enquiries.



3 Bush Paddock Avenue, Kellyville