

CastleHaven



8 Lydham Place Castle Hill NSW

4 3 2

There are endless possibilities with the listing of this classic Castle Hill home. The home has been immaculately maintained by owners with a keen attention to detail and holds an enviable cul-de-sac location in the much sought-after Cherrybrook Technology catchment.

Price : \$ 1,600,000
Land Size : 755 sqm
View : <https://www.castlehaven.com.au/sale/nsw/hills/castle-hill/residential/house/5735957>

With four bedrooms, three bathrooms and a double garage the home has the all the essentials for family living. Each of the four bedrooms is a generous size and features built-in robes and the master boasts an ensuite.

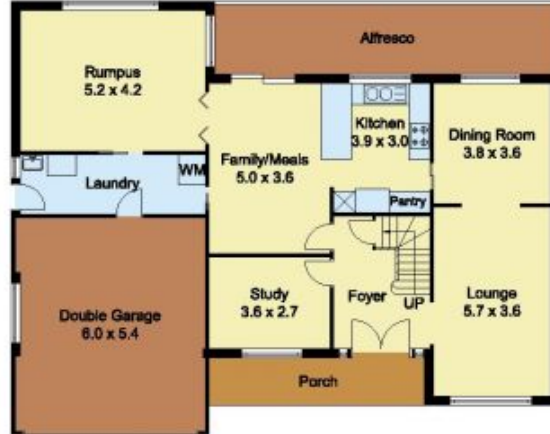
The sundrenched north-facing backyard is the stunning backdrop for the home's spacious timber kitchen and large family meals area. Large glass doors and windows ensure these key rooms enjoy abundant natural light throughout the year.



Colin Moss JP
02 9634 5222



SITE PLAN



GROUND FLOOR



FIRST FLOOR



Scale in metres, indicative only. Dimensions are approximate. All information contained herein is gathered from sources we believe to be reliable. However, we cannot guarantee its accuracy and interested persons should rely on their own enquiries.



8 Lydham Place, Castle Hill