

# CastleHaven



## 15 Walker Avenue Norwest NSW

6 5 3

This stylish, elegant and sophisticated residence holds centre court within a new and premium pocket of Norwest. With stunning render and paintwork, the 58sq home is a leader in design, fittings and style within one of the very best developments the Hills District has to offer.

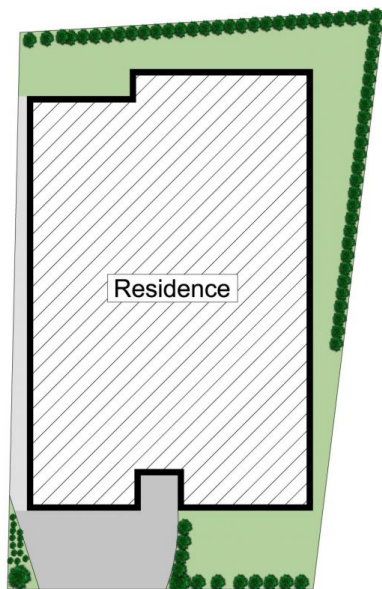
Architecturally designed and constructed with meticulous attention to detail by Billyard Homes the property is set on a generous 700msq block. Within this zone is an over-sized tiled alfresco entertaining area boasting outdoor kitchen ceiling heaters bringing a resort style ambiance to the home.

Inside, no expense has been spared with the high-quality floors and gourmet kitchen just a part of the excellence waiting to be discovered. The stunning kitchen has a large butler's pantry, island bench, polyurethane cabinets, 40mm

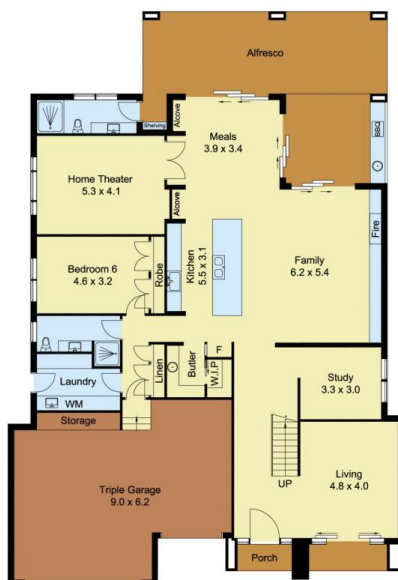
**Building Size** : 540 sqm  
**Land Size** : 700 sqm  
**View** : <https://www.castlehaven.com.au/sale/nsw/hills/norwest/residential/house/573607>  
7



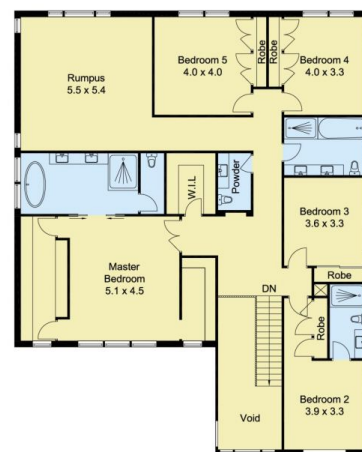
**Ryan Hawes**  
0431 687 600



SITE PLAN



GROUND FLOOR



FIRST FLOOR

0 1 2 3

Scale in metres, indicative only. Dimensions are approximate. All information contained herein is gathered from sources we believe to be reliable. However, we cannot guarantee its accuracy and interested persons should rely on their own enquiries.



# 15 Walker Avenue, Norwest