

CastleHaven



6 Farmland Drive Schofields NSW

4 2 2

This near new beautiful home, set in the best part of Schofields with only a short distance to all amenities, is sure to impress first home buyers, astute investors or those wanting easy maintenance and a good lifestyle.

Price : \$ 770,000

View : <https://www.castlehaven.com.au/sale/nsw/western-sydney/schofields/residential/house/5736081>

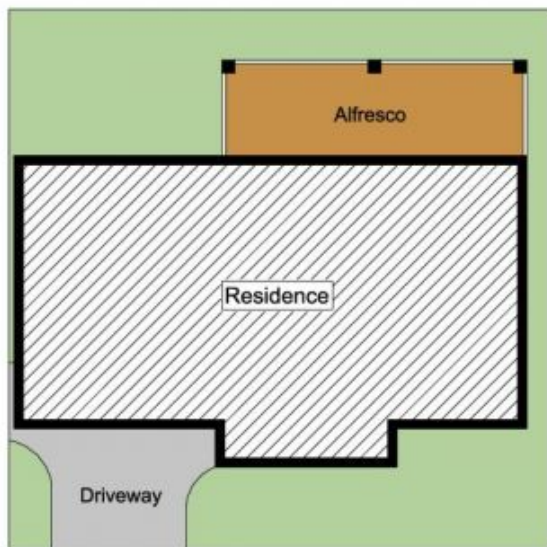
Surrounded by high quality properties and boasting four bedrooms with built-in robes and 2.5 stylish, modern bathrooms, including the ensuite to the master bedroom. The unique design encourages clever, versatile multiple living and features practical floor plan, adjoining the ultra-modern Caesarstone splash-back and polyurethane gas kitchen with large walk-in pantry and stainless-steel appliances. Private yard with Sunny Westerly aspect and outdoor cooking/BBQ entertainment area.



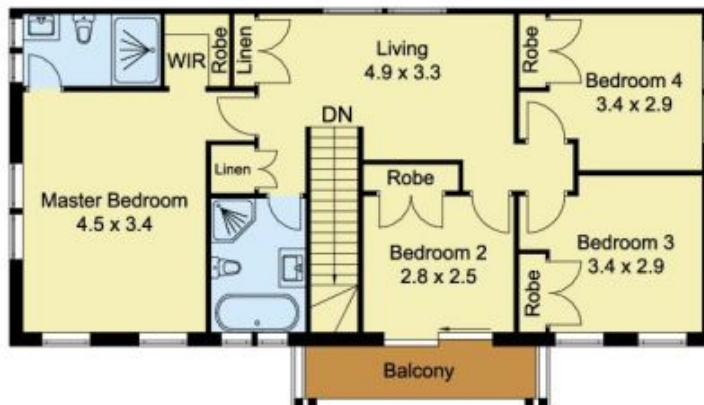
Vicky Williams
02 9634 5222

Other quality features and inclusions of this property are ducted air-conditioning, auto double lock-up garage with

<https://www.castlehaven.com.au>



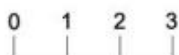
SITE PLAN



FIRST FLOOR



GROUND FLOOR



Scale in metres, indicative only. Dimensions are approximate. All information contained herein is gathered from sources we believe to be reliable. However, we cannot guarantee its accuracy and interested persons should rely on their own enquiries.

