




CastleHaven



38 Queensbury Street Schofields NSW

4  2  2 

Master built to exceptional standards, this cutting-edge, stunning residence offers an opportunity to call it your own.

Expansive open plan interiors showcase an innovative design with massive porcelain tiled lounge room, beautifully appointed family/meals and gourmet, white polyurethane kitchen boasting 40mm Caesarstone splash back and waterfall edge, soft closing drawers, modern 900mm gas appliances and dishwasher. Four bedrooms plus study, walk-in robe and ensuite to main with large balcony and built-in robes to the remainder.

High ceilings, down lights, ducted air conditioning, porcelain tiles, alarm, video intercom, massive storage in all areas with only moments' drive to shopping, transport, restaurants, theatres and cafes.

Building Size : 250 sqm
View : <https://www.castlehaven.com.au/sale/nsw/western-sydney/schofields/residential/house/5736098>



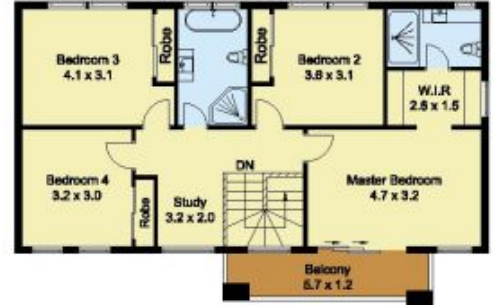
Vicky Williams
02 9634 5222



SITE PLAN



GROUND FLOOR



FIRST FLOOR



Scale in metres, indicative only. Dimensions are approximate. All information contained herein is gathered from sources we believe to be reliable. However, we cannot guarantee its accuracy and interested persons should rely on their own enquiries.

Lot 137 Schofields Farm Road, Schofields