

# CastleHaven



## 94 Marshall Road Carlingford NSW

2  1  1 

This charming Carlingford home boasts a comfortable two bedrooms, standout location and important updates to key rooms which bring a welcoming, cottage feel alive through the home's neat interiors.

Long, generous drapes, modern blinds, neutral paint tones and low-fuss flooring in key zones make this property not only very practical but also very appealing to a range of different buyers.

All families to inspect will quickly notice that this home is just so easy to move into with a minimum of fuss and set up.

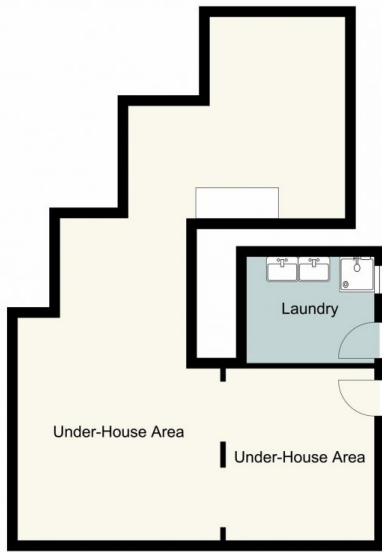
Set on a generous 606sqm block with dual occupancy potential (STCA) there are a host of possibilities for new owners to explore.

**Land Size** : 606 sqm

**View** : <https://www.castlehaven.com.au/sale/nsw/northern-suburbs/carlingford/residential/house/5736212>



**Deb Newton**  
02 9634 5222



94 Marshall Road, Carlingford  
 Total approx internal floor area 170 sqm



Drawing not to scale. Whilst the information contained in this floorplan is provided by reliable sources, we cannot guarantee its accuracy. It is intended as a guide only. Interested parties should rely on their own enquiry.