

# CastleHaven



## 11a Lakewood Drive Woodcroft NSW

3 1 1

Ideally positioned within proximity to shops, schools and transport facilities. This outstanding semi-detached, Torrens-title duplex will surely impress, making it an ideal home for a first home buyer, a busy executive or a savvy investor!

The spacious floor plan boasts a light filled open plan living and dining area with a good size kitchen overlooking the spacious backyard ready for the kids.

### Key Facts:

- ? Upstairs accommodation consists of 3 good size bedrooms with built-in-robos
- ? Light filled kitchen with gas cooking & plenty of cupboard space
- ? Easy access to main bathroom and a separate toilet!
- ? Single lock up garage with internal access and off-street

**View :** <https://www.castlehaven.com.au/sale/nsw/western-sydney/woodcroft/residential/semi-detached/5736228>



**Ryan Hawes**  
**0431 687 600**

# 11A Lakewood Drive Woodcroft

Floor Area Sizes

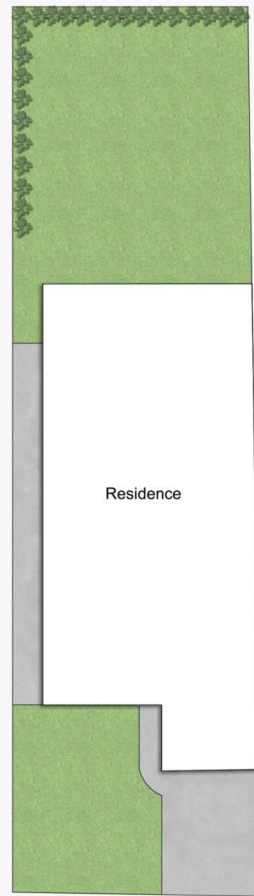
Internal 96m<sup>2</sup>

Garage 18m<sup>2</sup>

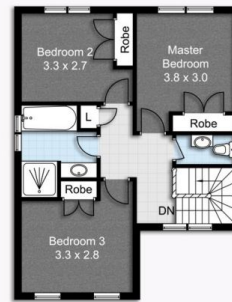
External 31m<sup>2</sup>

Total 145m<sup>2</sup>

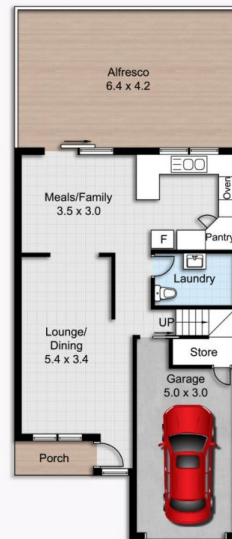
Block Size 266m<sup>2</sup>



SITE PLAN



FIRST FLOOR



GROUND FLOOR

Floor Plans designed for marketing purposes only and are indicative to approximate size and structure.  
All dimensions are approximate. Not drawn to exact scale and no liability will be accepted.

Marketing Plan designed by [www.shoot2sell.tv](http://www.shoot2sell.tv) **Shoot2Sell**  
Photography | Drone | Video

