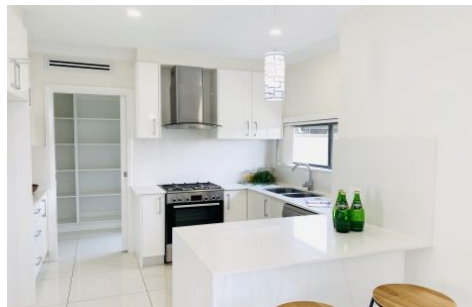


# CastleHaven



**18 Queensbury Street Schofields NSW**

**4** **2** **2**

An ultra-spacious design with extraordinary amount of natural light and effortless living have all been maximized to stunning effect in this near new home.

It boasts a peaceful setting on the high side of a premier family address, moments from express transport, schools, shopping, restaurants and parks.

There are four bedrooms, master with walk-in robe and ensuite bathroom. Numerous living areas upstairs TV room. 2.7m high ceilings, modern gas white kitchen with stone benches, quality appliances and walk-in pantry.

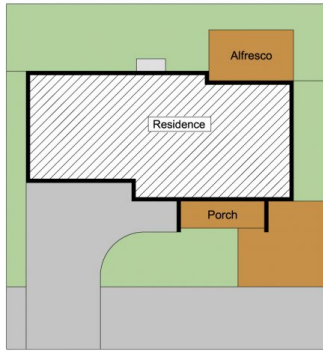
Loads of storage, ducted air, carpet on the upper level, security alarm, 2.5 luxurious bathrooms and a double automatic garage with internal access.

**Price** : \$ 762,500

**View** : <https://www.castlehaven.com.au/sale/nsw/western-sydney/schofields/residential/house/5736246>



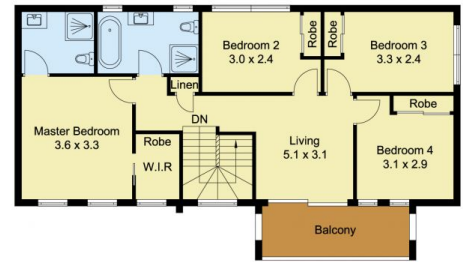
**Vicky Williams**  
**02 9634 5222**



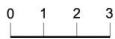
SITE PLAN



GROUND FLOOR



FIRST FLOOR



Scale in metres, indicative only. Dimensions are approximate. All information contained herein is gathered from sources we believe to be reliable. However, we cannot guarantee its accuracy and interested persons should rely on their own enquiries.



Unit 2, Lot 29, Queensbury Street, Schofields