

## 12 Birkdale Place Beaumont Hills NSW

6 2 2

Only 9 years old and set on approximately 450m2 high side block.

Double garage with internal entry and auto door.

All 6 bedrooms have built-in robes, walk in and ensuite to the master.

Large kitchen with 900mm stainless steel cooktop and oven.

Large island bench with breakfast bar.

Easy maintenance rear yard.

Easy access to local schools and shops.

Minutes to Rouse Hill Town Centre and Metro.

Beautiful quiet cul de sac location.

Loads of storage.

Homes in this area are going fast so don't miss out.

Disclaimer: We have obtained all information in this document from sources we believe to be reliable; however,

**Price** : \$ 1,120,000

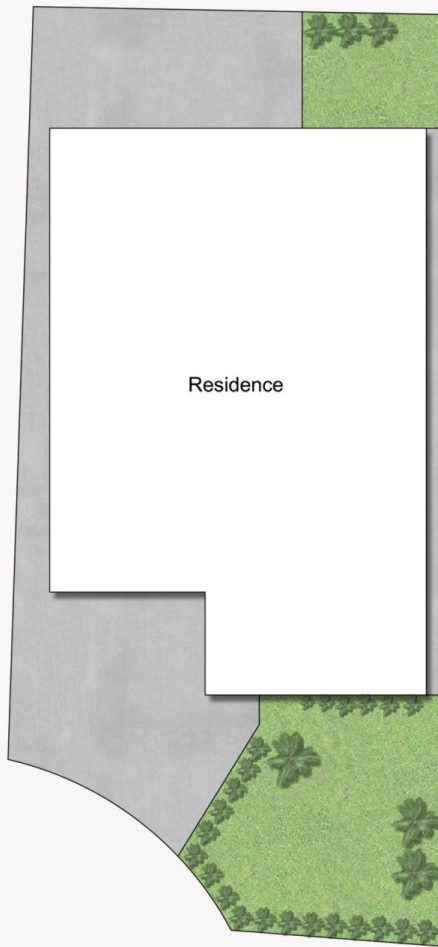
**Land Size** : 458 sqm

**View** : <https://www.castlehaven.com.au/sale/nsw/hills/beaumont-hills/residential/house/6337947>

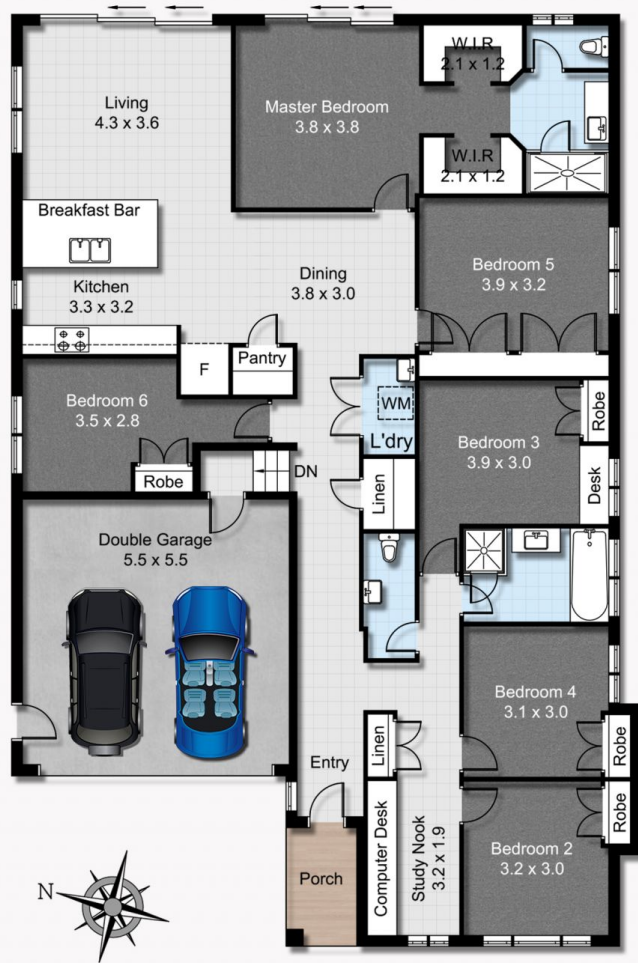


**Chris Fell**  
02 9634 5222

## 12 Birkdale Place, Beaumont Hills



SITE PLAN



GROUND FLOOR

Floor Plans designed for marketing purposes only and are indicative to approximate size and structure.  
All dimensions are approximate. Not drawn to exact scale and no liability will be accepted.

Marketing Plan designed by [www.shoot2sell.tv](http://www.shoot2sell.tv)

**Shoot2Sell**  
Photography | Drone | Video