

# CastleHaven



## 28 Crane Road Castle Hill NSW

4 2 2

Only moments from transport, schools and shops, 28 Crane Road, Castle Hill is a chance to secure a charming home with fuss free polished timber floors on a 708msq level block in the very heart of Castle Hill.

Appealing to first home buyers and investors alike, accommodation includes a formal lounge room with open fireplace, air conditioning and ceiling fans, a separate dining room and a sun room. Downstairs is a huge master bedroom with ensuite bathroom and walk-in robe. Upstairs are three spacious bedrooms and an enclosed verandah.

The kitchen includes stone bench tops and overlooks a huge yard which is extremely private and has a leafy, established garden.

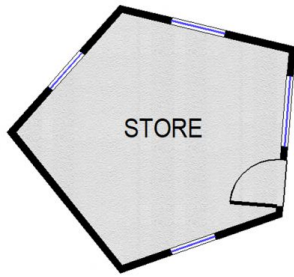
**Price** : \$ 2,000,000

**Land Size** : 708 sqm

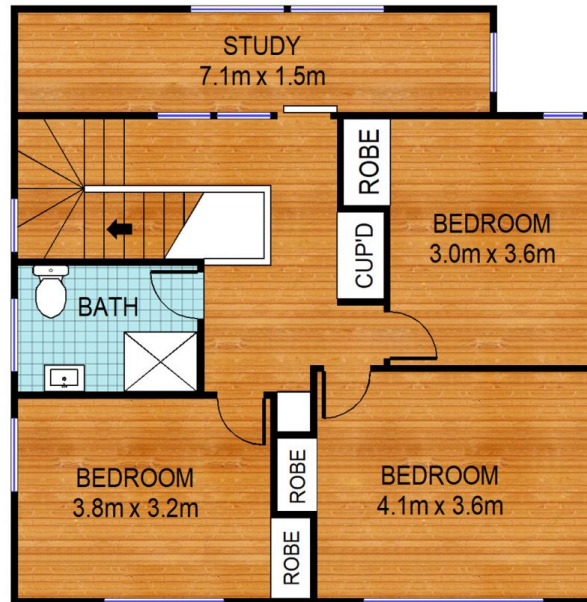
**View** : <https://www.castlehaven.com.au/sale/nsw/hills/castle-hill/residential/house/6634857>



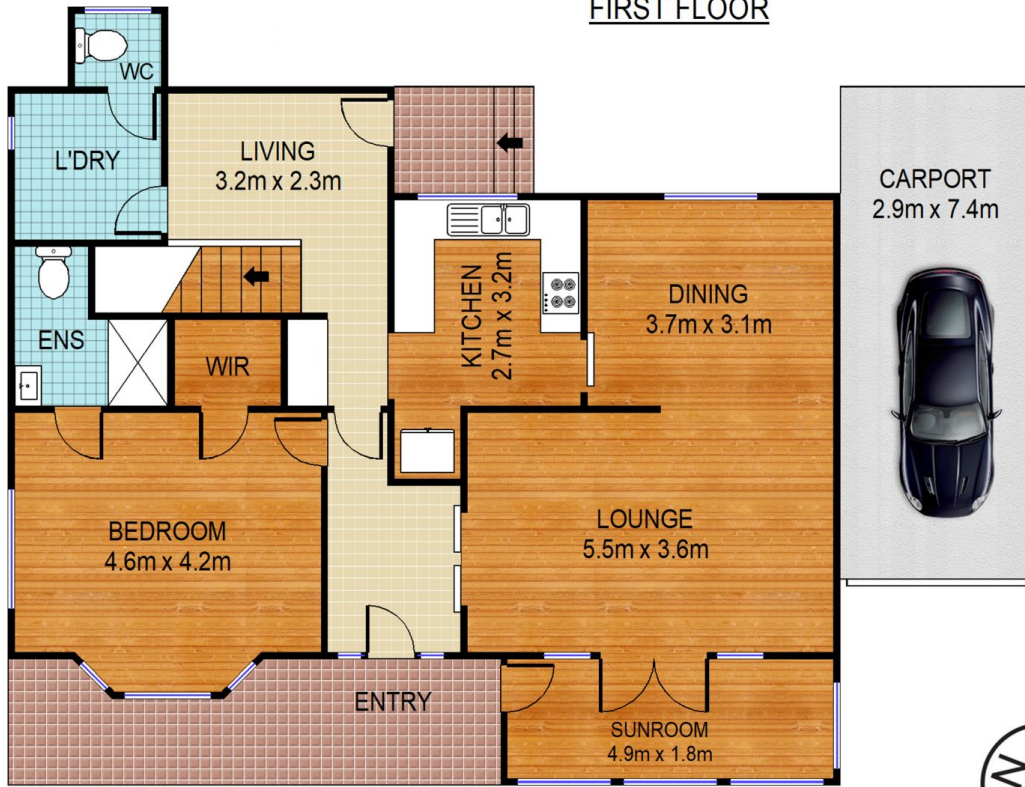
**Deb Newton**  
02 9634 5222



NOT IN POSITION



FIRST FLOOR



GROUND FLOOR



28 Crane Road, **Castle Hill**

**CastleHaven**

DISCLAIMER: All dimensions are approximate and for illustrative purposes. Interested parties should rely on their own enquiries.