




CastleHaven



17 Europa St Box Hill NSW

4  2  1 

Versatile and free-flowing layout packed with quality features and inclusions, complemented by superb private and leveled entertaining area, this beautiful home will appeal to families dreaming of a relaxed, peaceful lifestyle. With a desirable East fronting aspect, this home is located within short distance to the Rouse Hill Town Centre, numerous schools, bus transport, reserves and tranquil parklands plus easy access to Metro Station. Showcasing a spacious, single level floorplan featuring multiple living spaces, generous accommodation and a gorgeous alfresco area, this home offers the very best in easy family living.

Price : \$ 1,100,000

Land Size : 308 sqm

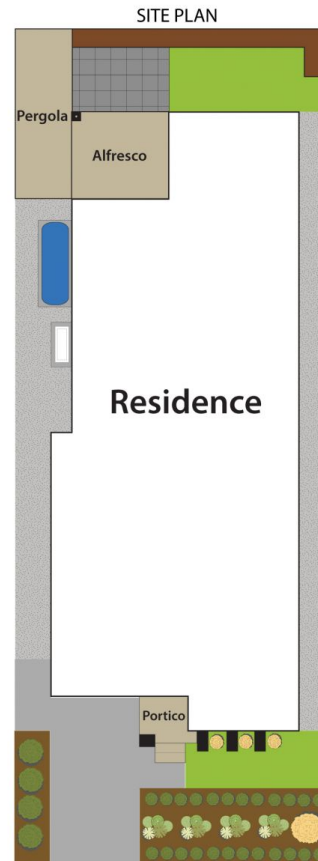
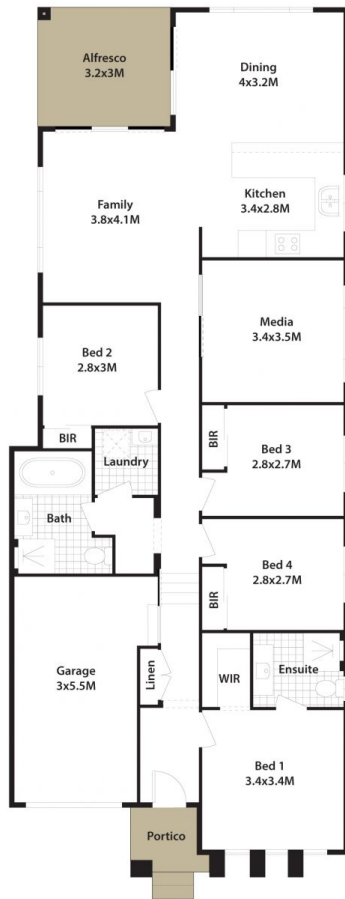
View : <https://www.castlehaven.com.au/sale/nsw/western-sydney/box-hill/residential/house/6702305>

? Large gas kitchen with stone benchtop, loads of storage and substantial food pantry

? Open plan living, dining and family zones at the heart of the home connect to the alfresco



Vicky Williams
02 9634 5222



17 EUROPA STREET, BOX HILL.

DISCLAIMER: All dimensions herein are approximate and gathered from sources believed to be reliable. Whilst every effort is made for the accuracy of our plans, interested parties should rely on their own enquiries.

CastleHaven