

# CastleHaven



18 Woodruff Street Marsden Park NSW

5 3 1

High quality and flawless finishes define this two-level residence which is set to become a stylish family retreat that boasts generous proportions brimming with natural light.

The property's versatile floor plan includes multiple living and entertaining areas with fold back doors creating a seamless outdoor flow on to extra-large alfresco entertaining area.

Framed by an easy care block this property is built to exacting standards and is surrounded by beautiful new homes.

The stunning gas kitchen has a large butler's pantry, island bench, polyurethane cabinets, 40mm Caesarstone benchtops and glass splashback.

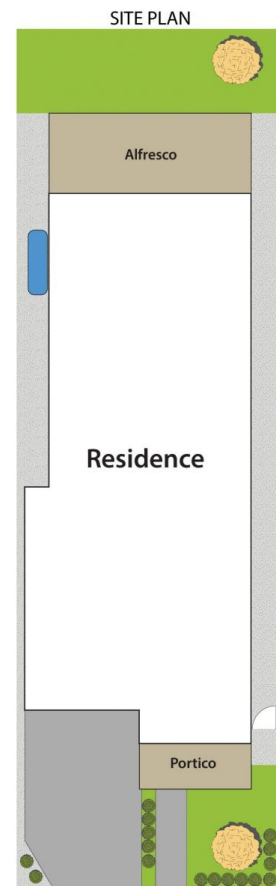
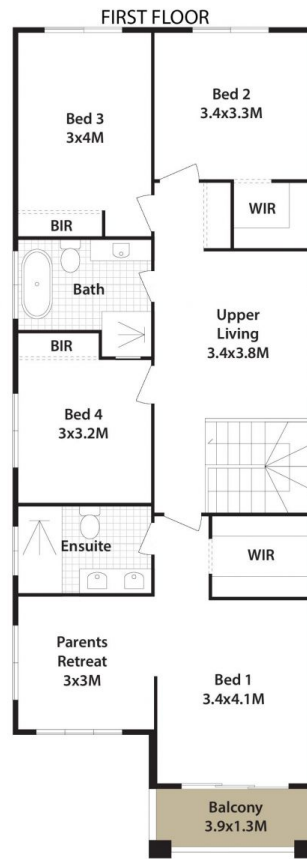
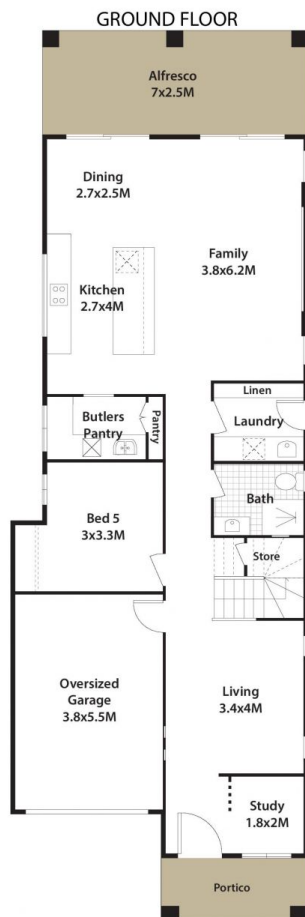
**Price** : \$ 1,200,000

**View** : <https://www.castlehaven.com.au/sale/nsw/western-sydney/marsden-park/residential/house/7114857>



**Vicky Williams**  
02 9634 5222

<https://www.castlehaven.com.au>



## 18 WOODRUFF ST, MARSDEN PARK.

DISCLAIMER: All dimensions herein are approximate and gathered from sources believed to be reliable. Whilst every effort is made for the accuracy of our plans, interested parties should rely on their own enquiries.

# CastleHaven