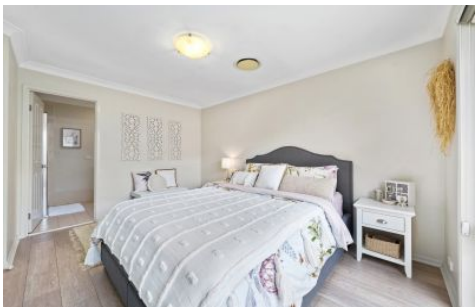


CastleHaven



9 Annfield Street Kellyville Ridge NSW

4  2  2 

This modern and stylish property offers the very best in single-level living with its great location near shops, schools and public transport, while still enjoying a lovely placement in a quiet, tree-lined avenue on an elevated 601msq block.

Land Size : 601 sqm
View : <https://www.castlehaven.com.au/sale/nsw/hills/kellyville-ridge/residential/house/7405305>

A tiled entry foyer leads to the spacious living areas which are well separated, but feature a versatile, open plan layout that flows seamlessly to the large, leafy and private rear yard and oversized, paved outdoor entertaining area with its pitched roof pergola.

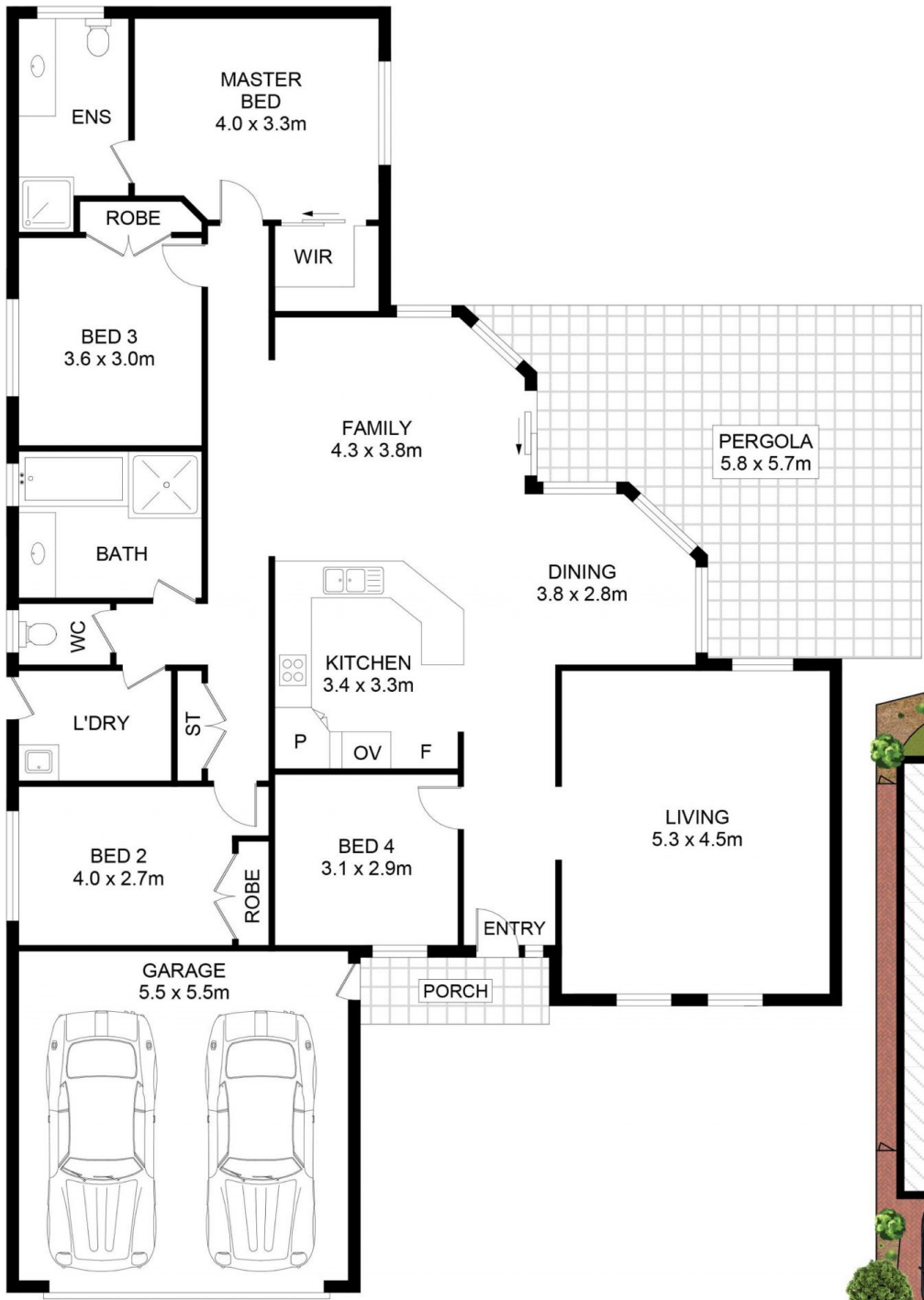
Important areas like the kitchen and bathrooms have enjoyed careful attention and appointments, and the stylish, modern kitchen boasts a pantry, breakfast bar, natural gas hot plates, electric wall oven, range hood and dishwasher.

The bedrooms are all of a good size and the master



Deb Newton
02 9634 5222

<https://www.castlehaven.com.au>



SITE PLAN (NOT TO SCALE)

9 Annfield Street, Kellyville Ridge

DISCLAIMER: No liability for the accuracy of details contained within our floor plans. All plans are drawn and also checked to the best of our ability, however information contained in our floor plans such as area calculations are approximate, and have not been surveyed or drawn to scale. Our floor plans are for representational purposes only and should be used as such. Do not attempt to refer to our floor plans for structural or detailed information.



CastleHaven