

# CastleHaven



## 36 Roland Garros Crescent North Kellyville NSW

4 2 2

Designed with stylish, low-maintenance living foremost in mind, this elegant, brand new, custom built residence is perfectly positioned in a quiet location offering peaceful surrounds.

At the heart of the home is the stunning gourmet kitchen with stone benches, soft closing cabinetry, 900mm SMEG stainless steel appliances and large walk-in pantry. Generous open plan spaces flow from the kitchen and outside to an oversized alfresco entertaining area with gas point and ceiling fan perfect to enjoy yourself or year round entertaining. A separate theatre room plus study or guest room are the finishing touches to the downstairs area.

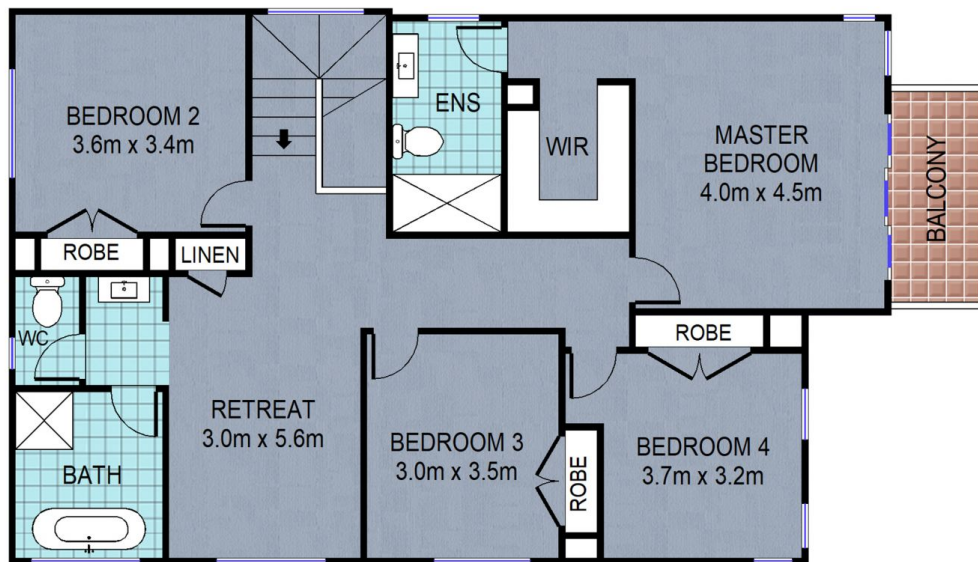
Upstairs, the home boasts a generous separate rumpus room, four large bedrooms, all with good size built-in wardrobes. The master suite includes a stunning ensuite,

**Price** : \$ 1,815,000  
**Land Size** : 385.9 sqm  
**View** : <https://www.castlehaven.com.au/sale/nsw/hills/north-kellyville/residential/house/7681371>

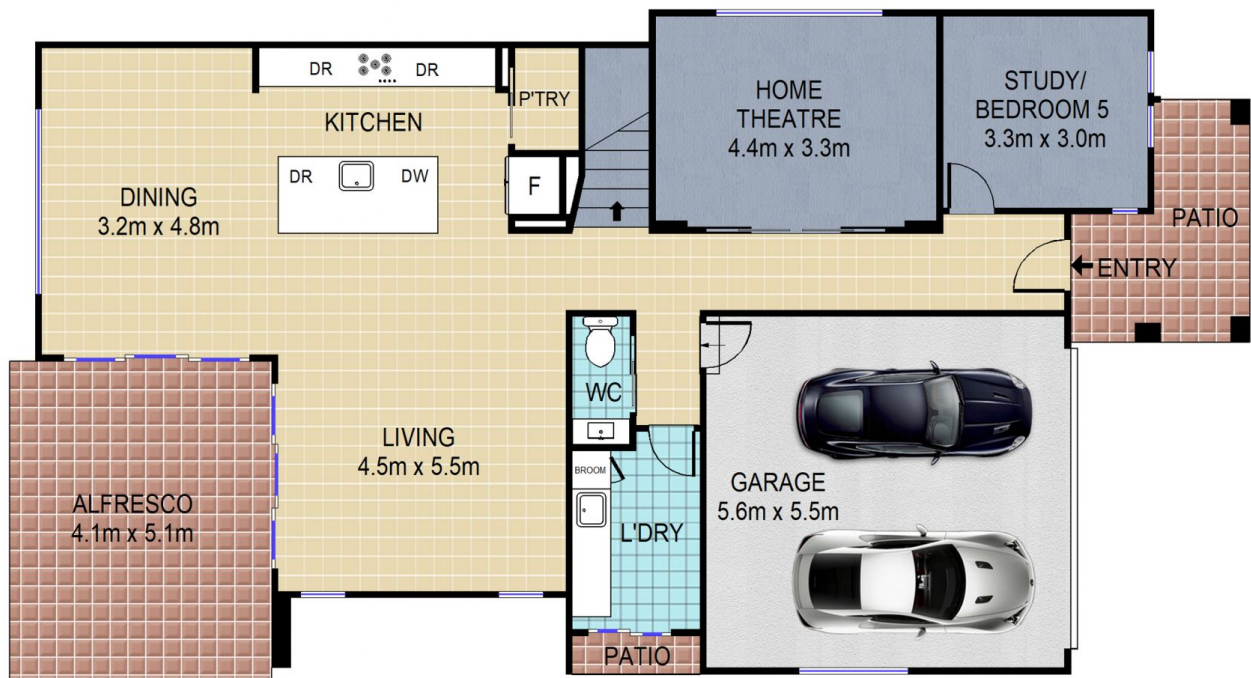


**Patrick Sanford**  
**02 9634 5222**

<https://www.castlehaven.com.au>



FIRST FLOOR



GROUND FLOOR



36 Roland Garros Crescent, **NORTH KELLYVILLE** **CastleHaven**

DISCLAIMER: All dimensions are approximate and for illustrative purposes. Interested parties should rely on their own enquiries.