

CastleHaven



2 Annabelle Crescent Kellyville NSW

4  2  1 

Step into a home that has stood the test of time, where nearly six decades of cherished memories and boundless love have shaped its walls. This single-level residence is more than just a house; it's a testament to a lifetime of moments that have woven into the fabric of its very foundation.

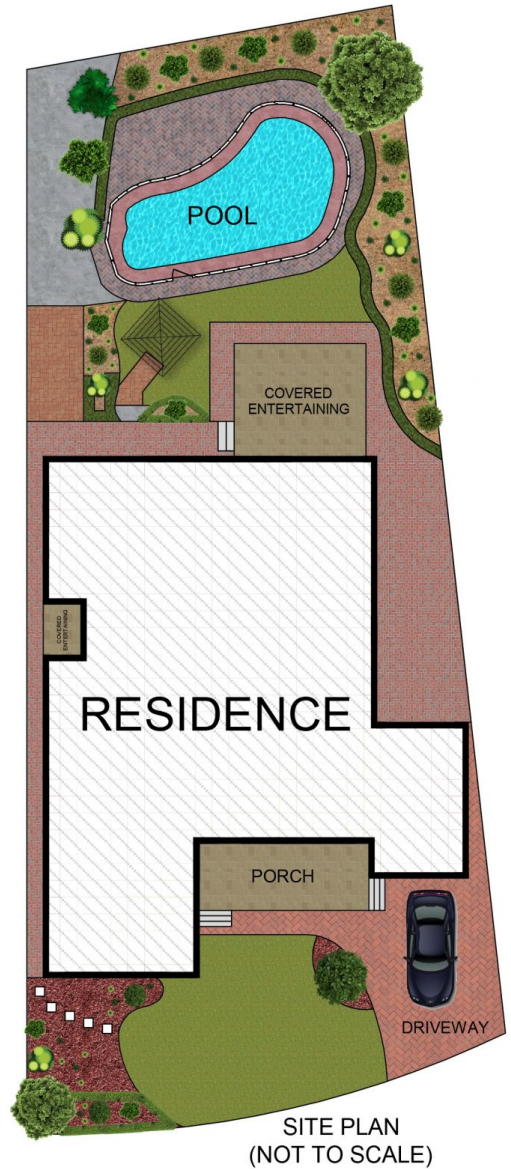
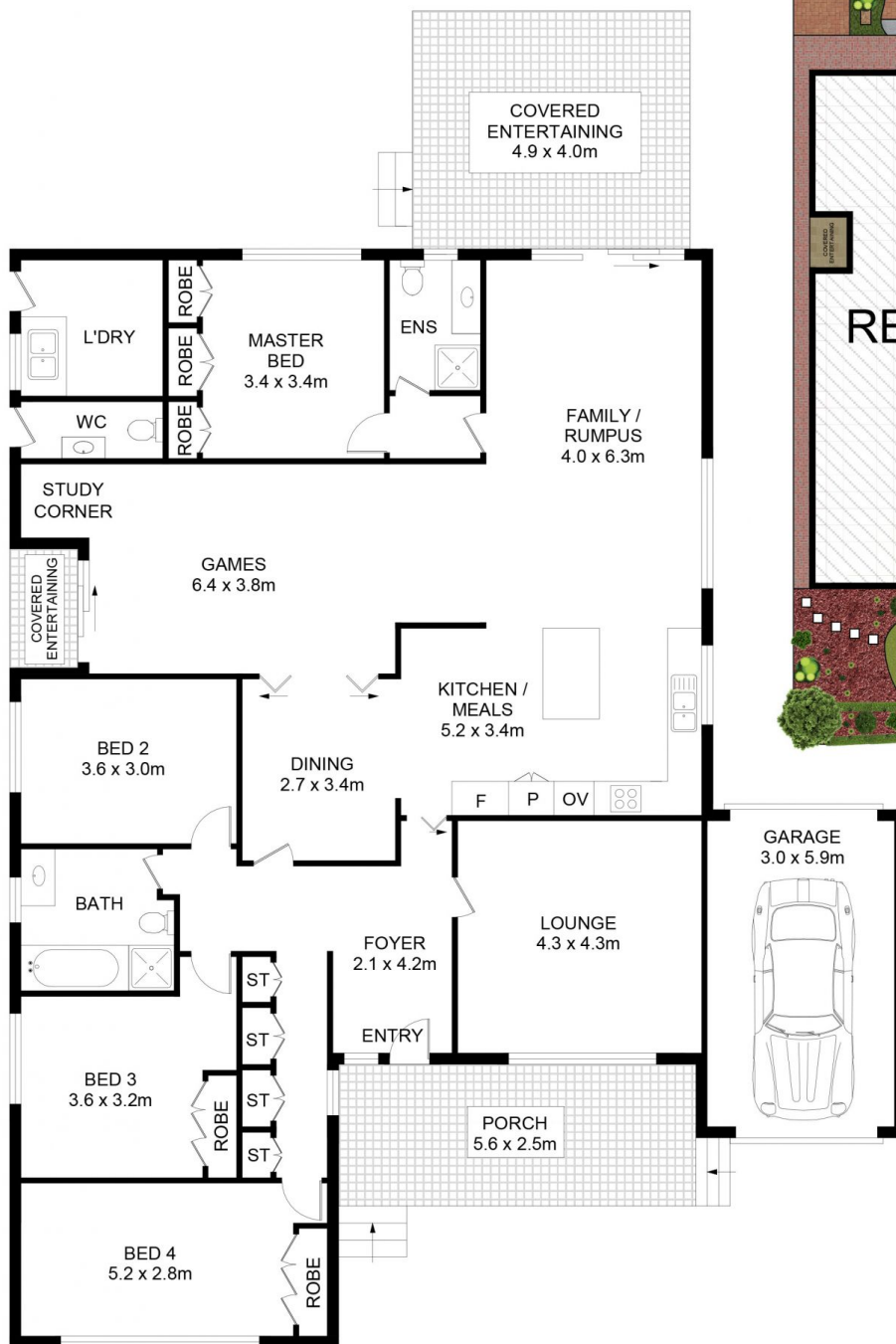
Upon entering, you are greeted by a warm and inviting atmosphere, with both a formal dining room and a living room that has witnessed countless family gatherings. Though currently an elegant space, the living room holds the potential for transformation into a fifth bedroom, adapting to the evolving needs of its future inhabitants.

A large family/rumpus room with timeless timber floors beckons, offering an ideal setting for both games and entertaining. Adjacent to it, a dedicated games/entertaining

Price : \$ 1,868,000
Land Size : 796.7 sqm
View : <https://www.castlehaven.com.au/sale/nsw/hills/kellyville/residential/house/7892886>



Deb Newton
02 9634 5222



2 Annabelle Crescent, Kellyville

DISCLAIMER: No liability for the accuracy of details contained within our floor plans. All plans are drawn and also checked to the best of our ability, however information contained in our floor plans such as area calculations are approximate, and have not been surveyed or drawn to scale. Our floor plans are for representational purposes only and should be used as such. Do not attempt to refer to our floor plans for structural or detailed information.



CastleHaven