

CastleHaven



10 Lakeview Close Norwest NSW

5 3 2

AUCTION 1PM THIS SATURDAY 28TH FEB

Set on an elevated 835m² block in a peaceful cul-de-sac, this substantial home offers generous proportions and flexible living for families seeking space and comfort, all within walking distance to the Metro, local shops and restaurants.

The tiled entry foyer leads to a sunken formal lounge and a separate formal dining conservatory, providing well-defined areas for everyday living and entertaining. The renovated kitchen sits at the centre of the home and features a breakfast bar, quality appliances and practical storage, including soft-close drawers.

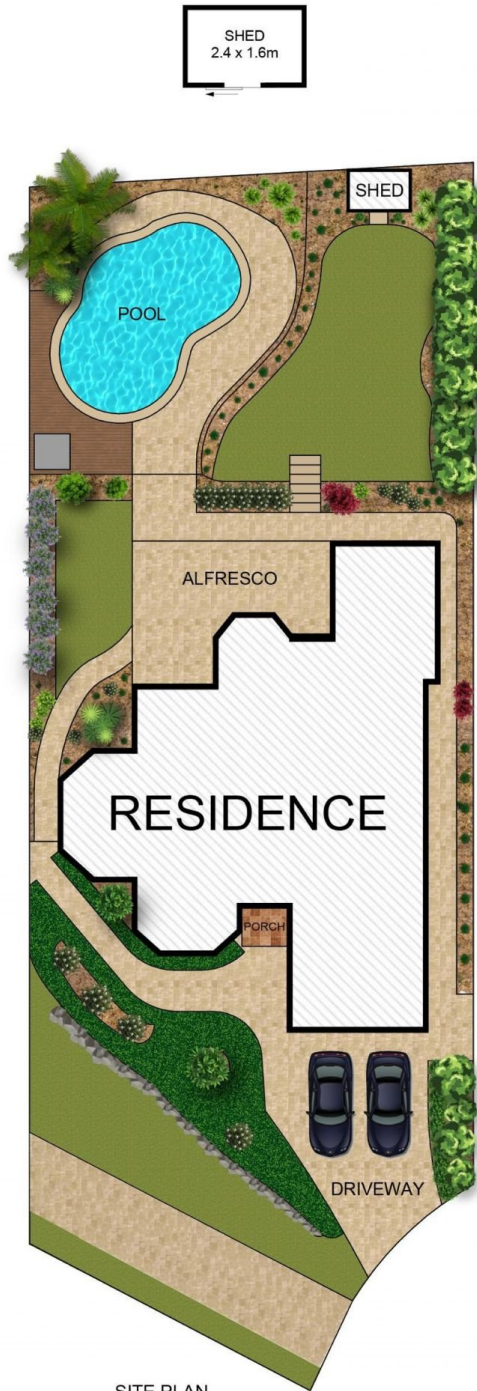
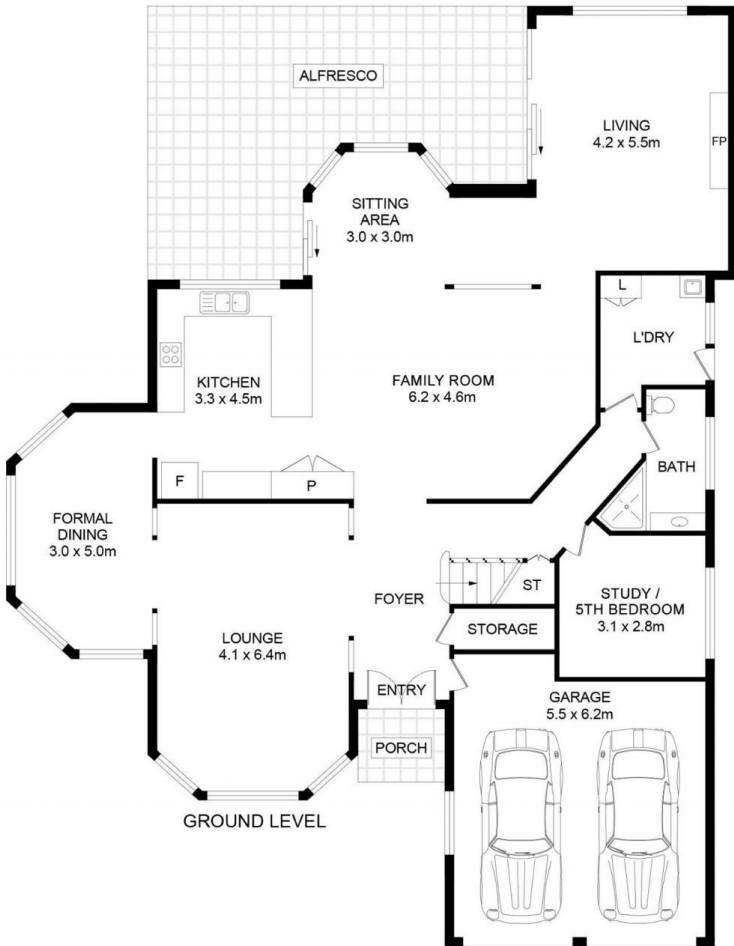
Multiple living areas include a family room, casual meals

[For full version visit the website](https://www.castlehaven.com.au)

Type : House
Price : \$ 2,873,000
Land Size : 836.8 sqm
View : <https://www.castlehaven.com.au/sale/nsw/hills/norwest/residential/house/8609365>



Deb Newton
02 9634 5222



10 Lakeview Close, Norwest

DISCLAIMER: No liability for the accuracy of details contained within our floor plans. All plans are drawn and also checked to the best of our ability, however information contained in our floor plans such as area calculations are approximate, and have not been surveyed or drawn to scale. Our floor plans are for representational purposes only and should be used as such. Do not attempt to refer to our floor plans for structural or detailed information.



CastleHaven